



Brown Sheep Company, Inc.

Pattern

## Boot Toppers

FREE

Designed Exclusively for Brown Sheep Company by Lorna Miser

**NEEDLES:** #8 (5mm) needles or size needed to get gauge

**SIZES:** One Size

**FINISHED SIZES:**

Approximately 14ö around x 3 1/2ö long on outside, 5ö long on inside

**GAUGE:** 16 sts and 24 rows = 4ö on #8 needles in stockinette stitch

**MATERIALS:** Brown Sheep Lana Boucle 1 skein LB77 Cinnamon Stick (A) and 1 skein LB75 Hunter Green (B), size 8 double pointed needles or circular needles 29ö

**NOTES:**

Toppers begin with ribbing which folds into the calf portion of a boot, then the fair isle flap is folded to the outside of the boot. Use double pointed needles or a ölong loopö method to work in the round, keeping floats loose.

### BOOT TOPPERS

#### Ribbing

Using A, cast on 56 sts. Join in the round being careful not to twist. Place marker for beg of round. Work in k2p2 ribbing for 5ö.

#### Fair Isle Cuff

Rnd 1: Using B, knit.

Rnd 2: Using B, purl.

Rnds 3 & 4: Using B, knit.

Rnds 5-15: Follow Fair Isle chart.

Rnds 16-17: Using B, knit.

Rnd 18: Using B, purl.

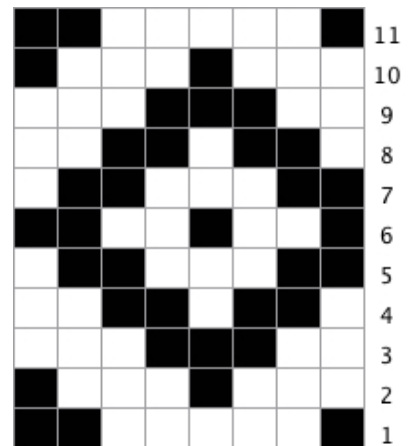
Rnd 19: Using B, knit.

Rnd 20: Using B, purl.

Bind off.

#### Finishing

Block Fair Isle section. Fold ribbing section inside cuff along purl ridge.





# Dear Amsterdam

knit and crochet inspired by the city of bicycles



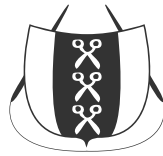
Stephen West    Malia Mather  
and Alexandra Feo

# Gestrikt

Malia Mather



This little bow tie is a must-have for the smartly dressed among us. Show your dedication to the craft and sport one knit up in alpaca, wool, heck even go traditional and knit up a silk or linen one. Linen stitch creates a sturdy and practical fabric perfect for this typically masculine accessory.



## Materials

**Sizes:** One Size (adjustable strap)

**Finished Measurements:**  
4.5" / 11.5 cm wide  
2" / 5 cm tall measured along outer side of bow  
1" / 2.5 cm tall measured at center

**Yarn:**  
DK

**Yardage:**  
22 yds / 20 m

**Shown in:**  
GGH Baby Alpaka

**Needles:**  
US 3 / 3.25 mm straight or circular needles

**Notions:**  
Tapestry needle  
Small Button about 1/2" / 1.2 cm diameter

**Gauge:**  
32 sts = 4" / 10 cm in linen stitch



## Abbreviations

**BO:** bind off

**CO:** cast on

**k:** knit

**p:** purl

**RS:** right side

**sl:** slip one

**st/s:** stitch/es

**WS:** wrong side

**wyif:** with yarn in front

**Note on Fiber choice:** If you choose



## Instructions

### Bow:

CO 16 sts

**Row 1 (RS):** (K1, sl1wyif) repeat to last 2sts, k2

**Row 2 (WS):** (p1, sl1wyib) repeat to last 2 sts, p2

Repeat last 2 rows until piece measures 23.5 cm / 9.25 in

BO using crochet cast off.

Seam cast- off edge to cast- on edge and set aside.

### Knot:

CO 12sts

**Row 1 (RS):** (K1, sl1wyif) repeat to last 2sts, k2

**Row 2 (WS):** (p1, sl1wyib) repeat to last 2 sts, p2

Repeat Row 1 and Row 2 until piece measures 6 cm in length.

Holding RS together, stitch together in a loop, turn right side out and sew on button to center of seam.

### Strap:

Pick up 6 sts from the side of the back of the knot where the seam comes together.

**Row 1 (RS):** (K1, sl1wyif) repeat to last 2sts, k2

**Row 2 (WS):** (p1, sl1wyib) repeat to last 2 sts, p2

Repeat Row 1 and Row 2 until the strap measures the desired neck circumference. Mak buttonhole as follows:

**Buttonhole Row (RS):** (K1, sl1wyif, k2tog, yo, k2

Repeat Row 2 once and then repeat Row 1 and Row 2 twice more. BO all stitches.

**Note:** To make an adjustable bow tie, work another repeat from buttonhole row to BO. If you are using alpaca as I did, remember that alpaca will grow! Make your buttonholes a bit earlier to account for a bit of growth.

### Finishing:

Slide Bow through Knot





## Knit Bead Bracelet

by Marnie Stockman

Photography: Molly Crealock



If you are one of those knitters that has to touch every yarn you see (and owns a good bit of it), then you probably look at the myriads of beads on the market with an envious eye. All of those colors and textures are just begging to be tried. But – how can you possibly knit with every yarn and learn to bead at the same time? Here's a logical solution: knit with beads.

Like you, I like to try new ideas, but so many seem to take too long to learn or too much of an investment. That is what led me to design a beaded bracelet that a beginner knitter could do with expert results. While knitting jewellery is a bit more tedious, in just a couple of hours you will have a piece that costs hundreds of dollars at a jewellery show (and you can say you knit your original yourself).

There are thousands of beads: glass, crystal, gemstone, clay, wood, etc. Any of which could be incorporated into a unique piece of jewellery, but for a basic bracelet (shown here in blue topaz, crystal quartz, and aquamarine) I recommend beads approximately 4mm in size.



### Ingredients

- »1 spool of 34 gauge silver or gold jewelry wire
- »1 clasp (toggle clasps work well)
- »100-200 4mm beads (depending on wrist size and desired width of bracelet)

- »1 rubber band
- »#2 needles (bamboo or aluminum that you don't mind scratching)

### Method

- »Pre-string the beads on the wire.
- »You will be knitting above the beads, so let out enough wire to give you room to work. (Helpful Hint: If your wire is tempted to spin off the spool like an out of control slinky, I recommend pulling out a length and then wrapping the spool with a rubber band.)
- »Cast on 4 sts, leaving at least an 8" tail (using simple loop technique) taking care not to pull too tight.
- »Purl 1st st, slide a bead up tight, purl the next st. Slide a 2nd bead up tight and purl the next st. Slide 3rd bead up tight and purl the last st.
- »Turn and knit 1 row.
- »Repeat rows 4 and 5 until desired length. NOTE: Be sure to tug on the finished rows or the bracelet will grow upon wearing. Finish off with a bead row and cast off.

### Finishing

- »Using a sewing needle (or the wire itself), weave the end of the wire in and attach one piece of the clasp at each end. Weave wire through the clasp several times to secure and tuck in the ends.

**About the author:** Like many knitters, Marnie Stockman learned from her mother when she was 6, 8, 10, each time completing at least one square before moving on to her next activity. While always having a knitting project going, it wasn't until Marnie wanted to be a stay-at-home mom that her business Frivolous Fibers became a reality. Now with a line of felted purse kits (including a line of leather, bamboo, rattan, and beaded handles), she has tried her hand at wire and bead knitting. Please check out her other wire and bead designs at [Frivolous Fibres](http://www.frivolousfibres.com). Happy knitting!



## CABLE CUP WARMERS

You can use any worsted weight yarn for this project, just make sure to go down a needle size from the one recommended so the stitches will be nice and tight. I used [Lion Brand Wool-Ease worsted weight yarn](#) and size US 7 needles. This is a quick knit that uses less than one skein of yarn.

The goal is for the sleeve to say xoxoxo with a 3-stitch ribbing on either side.



### Abbreviations used in this pattern:

- **C8F:** Slip 4 stitches from the left hand needle onto a cable needle, holding the cable needle *in front* of the main knitting. Knit the next 4 stitches from the left needle, then knit the 4 stitches from the cable needle.
- **C8B:** Exactly the same as C8F, but hold the cable needle *behind* the main knitting.

### Here's the pattern:

- Cast on 22 stitches



- **Row 1:** Knit 22
- **Row 2:** Knit 3, Purl 16, Knit 3
- **Row 3:** Knit 22
- **Row 4:** Knit 3, Purl 16, Knit 3
- **Row 5:** Knit 3, **C8F**, **C8B**, Knit 3
- **Row 6:** Knit 3, Purl 16, Knit 3
- **Row 7:** Knit 22
- **Row 8:** Knit 3, Purl 16, Knit 3

- **Row 9:** Knit 22
- **Row 10:** Knit 3, Purl 16, Knit 3
- **Row 11:** Knit 3, C8B, C8F, Knit 3
- **Row 12:** Knit 3, Purl 16, Knit 3
  
- **Rows 13-18:** Repeat rows 7-12
- **Rows 19-24:** Repeat rows 1-6
- **Rows 25-30:** Repeat rows 1-6
- **Rows 31-36:** Repeat rows 7-12
- **Rows 37-42:** Repeat rows 7-12
- **Rows 43-48:** Repeat rows 1-6
- **Rows 49-54:** Repeat rows 1-6
- **Rows 55-60:** Repeat rows 7-12
- **Rows 61-66:** Repeat rows 7-12
- **Rows 67-72:** Repeat rows 1-5
  
- **Row 73** (beginning of button holes): Knit 3, Cast Off 4, Purl 8, Cast Off 4, Knit 3
- **Row 74** (finishing the button holes): Knit 3, Turn work around, Cast On 4, Turn work around, Knit 8, Turn work around, Cast on 4, Turn work around, Knit 3
- Cast off 22 stitches

Now all that's left is to sew on a couple of buttons, slip your new sleeve onto your coffee cup, and enjoy!



Happy sipping!

## Cabled Boot Topper

Yarn: I used NaturallyCaron.com Country in 0007 Naturally, though you can use any DK or lightly worsted weight yarn. You could even choose a smaller size and work in worsted or aran if you wished.

Needle: one set of US 5 DPN, or size needed to obtain desired gauge. Also, you can use a small circular for the larger sizes.

Gauge: Not specific, you can play with it until you get a size you like.

Sizes: XS, S, M, L. (14", 16", 20", 24") circumference. I always fold the cuff over the top of my boots which hits me just below the knee, so, choose the size needed based not just on the size of your knee or calf but also your boots.

Notes: Standard abbreviations were used. You can substitute pretty much any pattern for the body section instead of the cables. I have a couple pairs in seed stitch, plain rib, and bobbles. This pattern is a recipe so if you have issues or get stuck feel free to contact me and I will be happy to help. That said, this is not a project suitable for cable newbies.



CO 68 (86, 110, 128). Join for in the round marking the beginning.

You will need to use what I call “the floating stitch” method when dividing the stitches among the needles. This means that there will be rows when you need to move stitches from one needle to another in order to have enough stitches to work the pattern. Think of it as re-dividing the stitches among the needles every row. But do not do this at the beginning or end (moving from needle 1 to 3, or 3 to 1), which will affect where the pattern starts! Or if you choose, use a small circular needle and none of that will be necessary.

Work 1 ½” (1 ½”, 2”, 2”) of desired ribbing. K one row.

Pattern row:

RC: place one st on cable needle, hold to back. K2, p1 from cable needle.  
LC: place two st on cable needle, hold to front. P1, k2 from cable needle.  
RT: place two st on cable needle, hold to back. K2, k2 from cable needle.  
LT: place two st on cable needle, hold to front. K2, k2 from cable needle.

Row 1: \*RC, LC,\* repeat \*\* to last 2 st, p2.  
Row 2, 4, 6: knit the k's and purl the p's to the end.  
Row 3: k2, p2, \*RT, p2,\* repeat \*\* to last 4 st, k2, p2.  
Row 5: \*LC, RC\* repeat \*\* to last 2 stitches, p2.  
Row 7: p1, \*LT, p2\* repeat \*\* to last 3 st, p3.  
Row 8: knit the k's and purl the p's to the end.

Repeat these rows until desired length, or 10" from beginning, ending on row 8.  
Next row: work 1 ½" of ribbing. Then, using [Jeny's Surprisingly Stretchy Bind Off \(link\)](#), bind off all stitches. Repeat pattern from beginning to make second cuff.

Copyright 2011 Anna Templer Designs. This pattern may only be produced and printed for personal use. AnnaTempler@gmail.com

## cabled boot toppers

---

### FINISHED SIZE

About 8" (20.5 cm) circumference, slightly stretched, and 8" (20.5 cm) long.

---

### YARN

Sportweight (#2 Fine).

*Shown here:* Berroco Ultra Alpaca Light (50% alpaca, 50% wool; 144 yd [133 m]/50 g): #4294 turquoise heather, 2 skeins.

---

### NEEDLES

Size U.S. 5 (3.75 mm): set of 5 double-pointed (dpn). Adjust needle size if necessary to obtain the correct gauge.

---

### NOTIONS

Marker (m); cable needle (cn); tapestry needle.

---

### GAUGE

32 stitches and 30 rows = 4" (10 cm) in k2, p2 rib, worked in rounds, slightly stretched.

I have always found it a shame that once boot weather starts, pretty handknit socks are sadly hidden until the next sock-showing season. Boot toppers are my answer to this problem. Let the boots hide the store-bought socks and allow the lushness of cables and frilly edges peek out where they can be enjoyed. Wrists a tad chilly? These can also be slipped over the hands to peek out from under coat sleeves. Add a Felted Leaf Brooch (page 23) for added flair.

## STITCH GUIDE

**RT** Knit the second stitch on the left-hand needle, then knit the first stitch, then slip both sts off the needle.

**T6R** Slip next 4 sts (2 knit sts and 2 purl sts) onto cn and hold in back of work, k2, sl the 2 purl sts from cn onto left-hand needle and purl these 2 sts, k2 from cn.

**T6L** Slip next 4 sts (2 knit sts and 2 purl sts) onto cn and hold in front of work, k2, sl the 2 purl sts from cn onto left-hand needle and purl these 2 sts, k2 from cn.

## BOOT TOPPER

Loosely CO 64 sts. Arrange sts evenly on 4 dpn, place marker (pm), and join for working in rnds, being careful not to twist sts. Work in k2, p2 rib until piece measures 4" (10 cm) from CO. Work cable as foll:

**RNDS 1, 5, 7, AND 11** \*RT (see Stitch Guide), p2, [k2, p2] 3 times; rep from \*.

**RND 2, 4, 6, 8, 10, AND 12** \*K2, p2; rep from \*.

**RND 3** \*RT, p2, T6R (see Stitch Guide), p2, k2, p2; rep from \*.

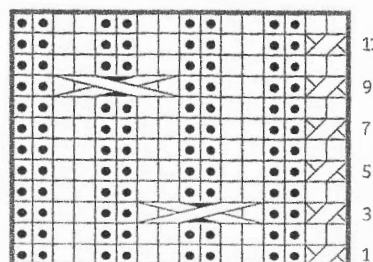
**RND 9** \*RT, p2, k2, p2, T6L (see Stitch Guide), p2; rep from \*.

Rep Rnds 1–12 for a total of 30 rnds (ending with Rnd 6)—piece measures about 8" (20.5 cm) from CO. BO in fringe as foll: BO 2 sts, \*sl st from right-hand needle onto left-hand needle, use the cable method (see Glossary) to CO 3 sts, BO 5 sts; rep from \*.

## FINISHING



## \* CABLED BOOT TOPPERS CHART



- knit
- purl
- RT: see Stitch Guide
- T6R: see Stitch Guide
- T6L: see Stitch Guide
- pattern repeat

# kaleidoscope YARNS

## **Cabled Neck Wrap**

### **Materials**

108 yards bulky weight yarn  
Size 9 US Needles  
Cable Needle

### **Abbreviations**

C4F: move next 2 stitches to a cable needle, hold to the front of work. Knit 2 stitches from left hand needle, then knit 2 stitches from cable needle.

### **Instructions**

Cast on 32 stitches.

### **Pattern:**

Rows 1, 5: (K4, P3) repeat to last 4 sts, K4

Rows 2, 4, 6: (P4, K3) repeat to last 4 sts, P4

Row 3: (C4F, P3) repeat to last 4 sts, C4F

Repeat rows 1-6 until you have about 2 yards of yarn left, ending having just worked a RS (odd numbered) row.

Buttonhole row: (P4, K1, YO, K2tog) repeat to last 4 sts, P4

Next row, bind off loosely in pattern.

Attach buttons, and block to size. Finished size should be about 6.5" by 26-27".



Free Pattern

# Felted Coasters, Hot Pads, and Beverage Jackets

Not for Resale

© Chris de Longpré, 2004  
www.KnittingAtKNoon.com

Simple and fun kitchen accessories.  
Ideas galore: ★Tie up a stack of pretty coasters when next you need a hostess gift ★Dress up a bottle of wine for gifting ★Make a set of beverage jackets for your little one's sports team (in team colors!) ★Experiment with new color combinations ★Use up left-overs in your stash or purchase yarn in *your* colors and make a set for your patio, boat, or cottage.



## **Materials:**

Yarn – Worsted weight, 100% wool yarn for felting, in three to five coordinating colors. Coaster: ~45 yds. total for each. Hot Pad: ~80 yds. total for each, as follows (from center out) – color A, 3 yds.; color B, 6 yds.; color C, 11 yds.; color D, 18 yds.; color E, 40 yds. Beverage Jacket: small(large) – ~50(70)yds. total for each.

Needles – 5 double-point needles and one 16” circular needle, US size 10 (6mm), or size needed to obtain gauge.

Other – Tapestry needle.

**Gauge:** 16 stitches and 20 rows = 4” in stockinet stitch (before felting).

**Size:** Size will vary somewhat depending on yarn and amount of felting. Approximate finished measurements: Coaster: 5” diameter; Hot Pad: 10” diameter; Beverage Jacket: Small (to fit 12 oz. beverage can or equivalent water bottle), Large (to fit standard wine bottle).

## **Notes:**

- 1) Certain colors (white and yellow, in particular) may not felt. It is essential to swatch to test the felting properties of the wool!
- 2) Felting: Set washer load size to small and fill with very hot water. Add a small amount of mild soap. Place items in a mesh bag and toss in the washer with several pairs of jeans. Agitate, checking every five minutes. Do not run through the spin cycle. When fabric is desired density and approximate size has been reached, remove and rinse thoroughly in cool water. Roll in a towel to remove as much excess water as possible. Pull, press, and pat into



shape and allow to dry completely. Beverage jacket should be blocked on a container of the size for which it is to be used. Hot pad can be flattened easily by placing under a plate weighted down with cans, books, or anything handy.

### **Instructions:**

**Coasters:** With double-point needles, cast on 8 sts. Distribute evenly over 4 needles and knit one round. Increase in each st in the next round, as follows: knit one st in the st below and then knit the st on the needle (16 sts). Knit 3 rounds even. Work another increase round (32 sts). Knit 4 rounds even. Knitting onto circular needle, work another increase round (64 sts). Knit 5 rounds even. Purl 1 round. Cast off loosely in knit. Use the tail from the cast on to close the center hole by weaving through the base of original sts and pulling up. Weave in ends and felt.

**Hot Pad:** Make as for coaster through the 5<sup>th</sup> even round, following the 3<sup>rd</sup> increase round (64 sts), changing colors on the 2<sup>nd</sup> and 3<sup>rd</sup> increase rounds. 4<sup>th</sup> increase (change colors): increase one st in **every other** st (96 sts). Knit 6 rounds even. 5<sup>th</sup> increase (change colors): increase one st in **every third** st (128 sts). Knit 5 rounds even. Purl 2 rounds. Bind off loosely in knit. Close up center hole as for coaster. Weave in ends and felt.

### **Beverage Jacket:**

Small (12 oz. can) – Make as for coaster through the 2<sup>nd</sup> increase round. Knit one round even. 3<sup>rd</sup> increase: Increase one st in **every other** st (48 sts). Bind off loosely in knit. With right side of bottom facing, pick up and knit 40 sts evenly around (skip every 7<sup>th</sup> st). Knit 20 rounds even, changing colors when desired. Purl 2 rounds. Bind off loosely in knit. Weave in ends and felt.

Large (wine bottle) – Make as for coaster through the 3<sup>rd</sup> increase round. Knit 2 rounds even. Bind off loosely. With right side of bottom facing, pick up and knit 50 sts evenly around (skip every 5<sup>th</sup> st). Knit 26 rounds even, changing colors when desired. Purl 2 rounds. Bind off loosely in knit. Weave in ends and felt.

## Knitting At Knoon Designs Knifty Projects for Hand Knitters

Knitting Patterns and Free Tutorial Knitting Videos  
[www.KnittingAtKNoon.com](http://www.KnittingAtKNoon.com)

Knitting At Knoon Designs are carried by a growing number of fine yarn stores. Resellers, please send for a brochure and price list:

[Chris@KnittingAtKNoon.com](mailto:Chris@KnittingAtKNoon.com)  
Knitting At Knoon Designs  
4783 Brooklyn Ave SE  
Kentwood MI USA 49508

Unsure about a technique used in this pattern? Visit [www.KnittingAtKNoon.com](http://www.KnittingAtKNoon.com) for free on-line video demonstrations of techniques used in this, and other, Knitting At Knoon patterns.



## Corridon's Baby Mittens

Materials: 50 yds fingering weight yarn

Needle: US #2 dpn

Loosely cast on 30 sts, divide on 3 dpn. Join to work in rounds.

Work K1, P1 ribbing for 3"

Switch to stockinette stitch and work even for 3"

Shape top:

Rnd 1: (K4, K2tog) rep around. (25 sts remain)

Rnd 2: knit

Rnd 3: (K3, K2tog) rep around. (20 sts remain)

Rnd 4: knit

Rnd 5: (K2, K2tog) rep around. (15 sts remain)

Rnd 6: (K1, K2tog) rep around. (10 sts remain)

Rnd 7: (k2tog) rep around. (5 sts remain)

Break yarn, feed tail through remaining sts, pull tight and weave in ends.

# CASCADE YARNS

THE WORLDS FINEST YARNS

DK308

## Lacy Scarf



Designed By Tanis Gray

# Lacy Scarf

By Tanis Gray

## Materials:

- 1 Hank Cascade Yarns Ultra Pima Paints (3.5oz/100g ea approx. 220yds/200m, 100% hand painted pima cotton) in #9775 Denim Mix
- Size US 7 (4.5 mm) Knitting Needles
- Tapestry Needle

Gauge:

- 22 sts and 24 rows/4" in lace pattern, blocked. Gauge is not imperative for this project.

Approximate Finished Size:

- 5.5" wide x 60" long

## Lace Pattern:

- **Row 1 (RS):** k2, [p4, k5, p4] twice, k2
- **Row 2 (WS):** k2 [k4, p5, k4] twice, k2
- **Row 3:** k2, [p3, k2tog, k1, yo, k1, yo, k1, ssk, p3] twice, k2
- **Row 4:** k2, [k3, p7, k3] twice, k2
- **Row 5:** k2, [p2, k2tog, k1, yo, k3, yo, k1, ssk, p2] twice, k2
- **Row 6:** k2, [k2, p9, k2] twice, k2
- **Row 7:** k2, [p1, k2tog, k1, yo, k5, yo, k1, ssk, p1] twice, k2
- **Row 8:** k2, [k1, p11, k1] twice, k2
- **Row 9:** k2, [k2tog, k1, yo, k7, yo, k1, ssk] twice, k2
- **Row 10:** purl
- **Repeat rows 1-10 for lace pattern**

## Instructions:

- CO 30 sts
- Knit 6 rows (garter st)
- Begin lace chart, working rows 1-10 for 27 reps or until desired length is reached

\*\*\*NOTE\*\*\* If more length is added, additional yarn will be needed


- Knit 6 rows (garter st)
- BO loosely knitwise
- Weave in all loose ends with tapestry needle
- Block well


|    | 13 | 12 | 11 | 10 | 9 | 8 | 7 | 6 | 5 | 4 | 3 | 2 | 1 |  |
|----|----|----|----|----|---|---|---|---|---|---|---|---|---|--|
| 10 |    |    |    |    |   |   |   |   |   |   |   |   |   |  |
| 9  | ↘  |    | ○  |    |   |   |   |   |   |   | ○ |   | ↗ |  |
| 8  | ●  |    |    |    |   |   |   |   |   |   |   |   | ● |  |
| 7  | ●  | ↘  |    | ○  |   |   |   |   |   | ○ |   | ↗ | ● |  |
| 6  | ●  | ●  |    |    |   |   |   |   |   |   |   | ● | ● |  |
| 5  | ●  | ●  | ↘  |    | ○ |   |   |   | ○ |   | ↗ | ● | ● |  |
| 4  | ●  | ●  | ●  |    |   |   |   |   |   |   | ● | ● | ● |  |
| 3  | ●  | ●  | ●  | ↘  |   | ○ |   | ○ |   | ↗ | ● | ● | ● |  |
| 2  | ●  | ●  | ●  | ●  |   |   |   |   |   |   | ● | ● | ● |  |
| 1  | ●  | ●  | ●  | ●  |   |   |   |   |   |   | ● | ● | ● |  |


**Legend:**

**purl**  
 RS: purl stitch  
 WS: knit stitch

**knit**  
 RS: knit stitch  
 WS: purl stitch

**k2tog**  
 RS: Knit two stitches together as one stitch  
 WS: Purl 2 stitches together

**yo**  
 RS: Yarn Over  
 WS: Yarn Over

**ssk**  
 RS: Slip one stitch as if to knit, Slip another stitch as if to knit. Insert left-hand needle into front of these 2 stitches and knit them together  
 WS: Purl two stitches together in back loops, inserting needle from the left, behind and into the backs of the 2nd & 1st stitches in that order



## Hot Out of the Oven Set

From Knit Picks



### Finished Sizes:

#### Oven Mitt

4¾" wide by 10" high

#### Casserole Mitt

total of 37" from tip to tip.

Mitts are the same size as the Oven Mitt above.

### Yarn:

**Set A:** Knit Picks *WotA Bulky Hand Dyed* (100% Peruvian wool; 137 yds/100 g):

- Oven Mitt: Spumoni 23954, 90 yards
- Casserole Mitt: Spumoni 23954, 250 yards

**Set B:** Knit Picks *WotA Bulky Hand Dyed* (100% Peruvian wool; 137 yds/100 g):

- Oven Mitt: Robins Nest 24260, 90 yards
- Casserole Mitt: Robins Nest 24260, 250 yards

### Needles

Size 11 (8.0mm), two 24" circular

### Notions

Stitch markers  
Scrap yarn  
Yarn needle

### Gauge:

12 sts = 4" in stockinette stitch. Check your gauge before you begin.

### Finished Sizes:

#### Spiral Pot Holder

8" diameter

#### Square Pot Holder

8" wide by 8" high

### Yarn:

**Set A:** Knit Picks *WotA Bulky Hand Dyed* (100% Peruvian wool; 137 yds/100g):

- Spiral: Spumoni 23954, 50 yards
- Square: Spumoni 23954, 40 yards

**Set B:** Knit Picks *WotA Bulky Hand Dyed* (100% Peruvian wool; 137 yds/100g):

- Spiral: Robins Nest 24260, 50 yards
- Square: Robins Nest 24260, 40 yards

**Needles** Size 13 (9.0 mm), 24" circular  
(Size 13 dpns, optional)

**Notions** Stitch markers, one of which is unique  
Scrap yarn  
Yarn needle

**Gauge:** 11 sts = 4" in stockinette stitch. Check your gauge before you begin.

**Note:** It will be very close, but one hank of *Wool of the Andes Bulky* should make one spiral and two square pot holders or one square pot holder and one oven mitt.



50516

## Spiral Pot Holder

**Note:** The cables of the Knit Picks needles are so flexible, you can use the Magic Loop technique all the way to the center of this pot holder. If you prefer to use dpns instead, you will also need a set of size 13 dpns.

Placing markers at every decrease location enables you to knit these pot holders without having to pay much attention. Once you get going, you can crank out a couple of potholders during a football game and still root for your favorite team!

### Directions

\*\*\*Using the long tail method, cast on 92 stitches, placing a marker every 10 stitches, leaving 2 stitches at the end.

Knit 12 rounds of I-cord on these last two stitches.

Now, place another marker and join without twisting. Knit the first round to the last three stitches (the two foundational I-cord stitches and the stitch before them). Slip the third stitch from the end from the left needle to the right needle; remove the marker. Slip this stitch back to the left needle and k2tog. Place marker that is different from the others; this will be your new marker to note the beginning of each round. To deal with the last stitch remaining on this round, slip the last stitch from the left needle to the right needle; remove the marker. Slip this stitch back to the left needle and k2tog. This k2tog is now the first stitch of round 2.

**Round 2:** \*Knit to 2 stitches before the marker, k2tog, slip marker\*; repeat from \*.

**Round 3:** Knit.\*\*\*

Repeat rounds 2 and 3 until there are 2 stitches remaining between each marker.

**Round 18:** \*K2tog\*; repeat to end, removing markers. 9 stitches remain on the needle.

**Round 19:** \*K2tog\*; repeat to last stitch, k1. 5 stitches remain on the needle.

Cut working yarn, leaving a 12" tail. Thread this tail through the remaining stitches, pull tail through the center and weave in ends. Use the yarn tail from the long tail cast on to tighten the join at the base of the I-cord while you are weaving in that end.

## Square Pot Holder

**Note:** The cables of the Knit Picks needles are so flexible, you can use the Magic Loop technique all the way to the center of this pot holder. If you prefer to use dpns instead, you will also need a set of size 13 dpns.

\*\*\*Using a long tail cast on, cast on 86 stitches in this sequence: 20 stitches, pm, 1 stitch, pm, 20 stitches, pm, 1 stitch, pm, 20 stitches, pm, 1 stitch, pm, 20 stitches, pm, 1 stitch, pm, 2 stitches.

Knit 12 rounds of I-cord on these last two stitches.

Now place another marker and join without twisting. Knit the first round to the last three stitches (the two foundational I-cord stitches and the stitch before them). Slip the third stitch from the end from the left needle to the right needle; remove the marker. Slip this stitch back to the left needle and k2tog. Place marker that is different from

the others; this will be your new marker to note the beginning of each round. To deal with the last stitch remaining on this round, slip the last stitch from the left needle to the right needle; remove the marker. Slip this stitch back to the left needle and k2tog. This k2tog is now the first stitch of round 2.

**Round 2:** Knit.

**Round 3:** \*K2tog, knit to 2 stitches before next marker, k2tog, slip marker, k1, slip marker\*; repeat to end of round.\*\*\*

**Round 4:** Knit.

Repeat rounds 3 and 4 eight more times. You will have a total of 12 stitches on your needle in this sequence: 2 stitches, marker, 1 stitch, marker, 2 stitches, marker, 1 stitch, marker, 2 stitches, marker, 1 stitch, marker, 2 stitches, marker, 1 stitch, marker.

**Round 21:** (As you knit, remove the markers except for the one noting the beginning of the round.) \*K2tog, k1\*; repeat to end. 8 stitches remain on the needle.

**Round 22:** \*K2tog\*; repeat to end. 4 stitches remain on the needle.

Cut working yarn, leaving a 12" tail. Thread this tail through the remaining stitches, pull tail through the center and weave in all ends. Use the yarn tail from the long tail cast on to tighten up the join at the base of the I-cord while you are weaving in that end.

## Oven Mitt

These instructions are written for two circular needles, but are easily adapted to double pointed needles. If you prefer working on dpns, you'll need a set in size 11.

This mitt will look very disproportionate before it is felted because felted fabric shrinks more in height than it does in width.

Don't worry – it'll fit like a glove!

Using a long tail cast on, leaving a 48" long tail, cast 18 stitches onto needle A. Using the same long tail, continue to cast 18 stitches onto needle B. Join without twisting and knit 30 rounds. (The extra long tail still remaining from the cast on will be used later for an I-cord hanging loop.)

**Round 31:** Knit on needle A to the last 4 stitches. Thread a 12" length of scrap yarn through these 4 stitches and remove them from the needle. Turn to work from needle B. Thread this same scrap yarn through the first 4 stitches on needle B and remove them from the needle. These will become the outside thumb stitches later. Go back to the working end of needle A (the right needle, where the working yarn is waiting). Using a backward loop, cast on 8 replacement stitches to needle A. To keep the stitches going in the correct direction, slide the last 4 backward loop stitches onto the left end of needle B. Now your working yarn will be hanging 4 stitches in from the left end of needle B. Bring up the right end of needle B and slip these 4 stitches over to the right tip of needle B. Pick up the working yarn and finish knitting the stitches from needle B.

Knit 19 more rounds, for a total of 20 rounds starting from the thumb opening.

**Round 50:** Needle A - K1, SSK, knit to 3 stitches from end of needle, k2tog, k1. Repeat for Needle B.

**Round 51:** Knit

Repeat rounds 50 and 51 four more times. You will have 8 stitches

remaining on each needle for a total of 16 stitches.

Join the 8 remaining stitches from needle A and needle B together using the Kitchener Stitch.

### Thumb

Return the held outside thumb stitches to a needle. This will be needle A.

Using the long tail method, cast on and leaving a very long tail (this tail will be used later to sew the inside thumb to the hand), cast on 8 stitches to needle B.

With the working yarn from needle B, knit the 8 stitches on needle A. Then join without twisting and complete the round, knitting the cast on stitches on needle B.

Knit 12 more rounds for a total of 13 rounds from the thumb split.

**Round 14:** \*K2tog, k1\*; repeat to last 4 stitches, k2tog twice. 10 stitches remain on the needles.

**Round 15:** Knit.

**Round 16:** \*K2tog\*; repeat to end. (You will need to transfer the last stitch on needle A to needle B in order to knit those 2 stitches together.) 5 stitches remain on the needles.

Cut working yarn, leaving a 12" tail. Thread this tail through the remaining stitches, pull tail through the center and weave in all ends.

Using the left over yarn from the long tail cast on at the inside thumb, slip stitch together the inside base of the thumb and the inside of the hand. Securely weave in the end.

### I-cord Hanging Loop

Using the left over yarn from the long tail cast on, make two stitches on either a DPN or a circular needle using the backward loop method. Knit 12 rounds of I-cord on these two stitches. Take the working yarn tail and pull it back through the two live stitches and slip them off the needle. Use the remaining tail to whip stitch the end of the I-cord to the base of the mitt and also to secure the start of the I-cord in the same manner. Weave in the end.

### Casserole Mitts

This handy item consists of two oven mitts joined by a strip of knitted fabric. It's perfect for securely lifting heavy, hot pans from the oven.

Knit one Oven Mitt.

Leave off the I-cord hanging loop.

### Band

Using the long tail method and leaving a very long tail (18" or so), cast on 18 stitches.

**Row 1:** Knit.

**Row 2:** Purl.

Repeat rows 1 and 2 forty-one more times.

**Row 85:** Purl.

### Begin attached Oven Mitt

**Row 86:** Knit. Using the working yarn at the end of this row, cast on 18 stitches to a second circular needle (needle B) using the backward loop cast on method.

**Round 1:** Using the working yarn left at the end of the cast on stitches, join without twisting and knit the stitches on the first needle (needle A). Continue on to knit the cast on stitches on needle B.

From here, follow the pattern for the Oven Mitt. Knit 29 more rounds before separating the thumb stitches as directed at Round 31.

### Finishing

Using the yarn tail left from the long tail cast on at the beginning of the band, mattress stitch the 18 stitches on the palm side of the base of the first oven mitt to the 18 stitches at the end of the band. You may want to try the oven mitts on and pin the band to the first mitt where it should go to ensure the mitts are facing the correct way. If you lay the pieces flat, the thumbs of both mitts should be pointing away from you, with the band lying flat, and the openings at the base of the mitts above the band, not hidden by the band. Think about it as if you are doing a spread eagle, with both palms flat on the table, fingers pointing out and thumbs pointing up.

Weave in all ends securely.

### Felting

Use the hot water wash and standard agitation settings of a top loading washing machine. Set your washing machine for a medium or large load. Pour 2 to 3 tablespoons liquid laundry detergent or liquid dishwashing soap in while the machine fills up with hot water. Put in your pot holders, oven mitts and an old pair of jeans or a couple old towels (for abrasive action). Make sure the towels or jeans are old and do not produce lint which could get locked into the felted items. Run through the agitation cycle. If your washer does not have a hot rinse option, stay nearby and stop the machine before the rinse cycle begins. Our samples took two hot wash cycles to fully felt, so you will want to check at the end of the first hot wash cycle. If the fabric is still stretchy at all or if you can clearly see the knit stitches, you will need to run them through a second hot wash cycle, and maybe a third. Once the hot pads and oven mitts are fully felted, let them go through a cold rinse cycle and spin out the excess water.

### Shaping & Drying

**Pot Holders:** Lay flat, and press down if needed. A glass pie plate works perfectly for this. After a few hours, you can remove the pie plate and let the pot holders air dry. They should be completely dry in about 24 hours.

**Oven Mitt:** Try the mitt on and stretch to fit. It is intended to fit snugly, since floppy mitts can make picking up hot, heavy items dangerous. Lay flat and let air dry.

**Casserole Mitt:** Try both the mitts on and stretch them to fit. Lay flat and let air dry.





## Red, White & Blue Potholders & Oven Mitt

If you would like more colors to choose from, try working the potholders with a double strand of Wool of the Andes. Mix solids and heathers as you choose to coordinate with your kitchen, or make a themed set for Independence Day or other holiday of your choice.

### Oven Mitt

Using two strands of yarn throughout, work as given for Bulky version.

### Spiral Potholder

Using two strands of CC, follow pattern as given from \*\*\* to \*\*\*. Changing to a double strand of MC, work as given for Bulky version.

### Square Potholder

Using two strands of CC, follow pattern as given from \*\*\* to \*\*\*. Changing to a double strand of MC, work as given for Bulky version.

### Yarn:

Knit Picks *WotA*

(100% Peruvian wool; 110 yds/100 g):

- Oven Mitt: Red 23734, 2 skeins
- Spiral: Sapphire Heather 23899 (MC), 2 skeins  
Cloud 23432(CC), 1 skein
- Square: Arctic Pool Heather 23894 (MC), 2 skeins  
Cloud 23432(CC), 1 skein

**Needles**• Oven Mitt: Size 11 (8.0mm), two 24" circular

- Spiral & Square Potholders: Size 13 (9.0 mm), 24" circular  
(Size 13 dpns, optional)

**Notions**Stitch markers

Scrap yarn

Yarn needle

### Gauge:

- Oven Mitt: 12 sts = 4" in stockinette stitch.
- Potholders: 11 sts = 4" in stockinette stitch.  
Check your gauge before you begin.

### Note:

One skein of the contrast color is enough for both potholders.

### Yarn:

Knit Picks *WotA*

(100% Peruvian wool; 110 yds/100 g):

- Oven Mitt: Red 23734, 2 skeins
- Spiral: Sapphire Heather 23899 (MC), 2 skeins  
Cloud 23432(CC), 1 skein
- Square: Arctic Pool Heather 23894 (MC), 2 skeins  
Cloud 23432(CC), 1 skein

**Needles**• Oven Mitt: Size 11 (8.0mm), two 24" circular

- Spiral & Square Potholders: Size 13 (9.0 mm), 24" circular  
(Size 13 dpns, optional)

**Notions**Stitch markers

Scrap yarn

Yarn needle

### Gauge:

- Oven Mitt: 12 sts = 4" in stockinette stitch.
- Potholders: 11 sts = 4" in stockinette stitch.  
Check your gauge before you begin.

## Pear Bread Pudding

When we were discussing how to photograph these hot mitts, we laughingly agreed we couldn't show them with empty pans. So, what to bake in the pan? Something super easy, warm and slightly sweet: a comforting dessert for a chilly winter evening (and breakfast the next morning, drizzled with maple syrup!).

1 loaf French bread, cut into 1" cubes  
 3 fresh ripe pears, peeled, cored and sliced OR  
 1-15oz. can pears, drained and sliced  
 ½ cup golden raisins  
 6 eggs  
 3 cups milk (can use non-fat, or use half milk, half heavy cream if calories are not a concern)  
 ½ cup brown sugar  
 1 teaspoon rum flavoring  
 Ground nutmeg

Spread the bread cubes, pear slices and golden raisins in a greased 13" x 9" pan and gently toss to evenly distribute.

In a blender, whirl together the remaining ingredients except the nutmeg. Pour over the bread cubes and fruit. Press down on the bread cubes and fruit with the back of a large spoon so that all pieces are either covered with the egg mixture or soaked through. Lightly sprinkle ground nutmeg over the top.

Bake in 350°F oven for 50 minutes. The top will be lightly browned and the pears should be soft enough to pierce with a fork. Shake the pan gently to see if the custard has set. If not, return to oven for another five minutes – but you may prefer to remove the bread pudding while the center is still quite moist for a creamier final texture.

| Abbreviations |                                                     | cn     | cable needle           | pat       | pattern                               | sl1k  | slip 1 kwise                  |
|---------------|-----------------------------------------------------|--------|------------------------|-----------|---------------------------------------|-------|-------------------------------|
| "             | inches                                              | CO     | cast on                | pm        | place marker                          | sl1p  | slip 1 pwise                  |
| ( )           | rep inst bet ( )'s as many times as noted afterward | cont   | continue               | pop       | popcorn                               | SSK   | sl, sl, k these 2 sts tog     |
| *             | rep inst foll single * as directed                  | dec    | decrease(es)           | pr        | previous row                          | sssk  | sl, sl, sl, k these 3 sts tog |
| **            | rep inst bet **'s as many times as noted after      | dpn    | double pointed needles | prev      | previous                              | pssso | pass slipped stitch over      |
| [ ]           | rep inst bet [ ]'s as many times as noted after     | fl     | front loop(s)          | pwise     | purlwise                              | St st | stockinette stitch            |
| alt           | alternate                                           | foll   | follow(s)(ing)         | R         | row                                   | sts   | stitch(es)                    |
| approx        | approximately                                       | Inst   | instructions           | rem       | remain(ing)                           | tbl   | through back loop             |
| beg           | begin/beginning                                     | K, k   | knit                   | rep       | repeat                                | tfl   | through front loop            |
| bet           | between                                             | k2tog  | knit two sts together  | Rev st st | reverse stockinette stitch            | tog   | together                      |
| BO            | bind off                                            | kwise  | knitwise               | RH        | right hand                            | WE    | work even                     |
| CA            | color A                                             | LH     | left hand              | rnd(s)    | round(s)                              | WS    | wrong side                    |
| CB            | color B                                             | lps    | loops                  | RS        | right side                            | wyib  | with yarn in back             |
| CC            | color C                                             | m      | meter                  | sk        | skip                                  | wyif  | with yarn in front            |
| cm            | centimeter(s)                                       | M1     | make one stitch        | sk2p      | sl 1, k2tog, pass slipped stitch over | ybk   | yarn backward                 |
|               |                                                     | MC     | main color             |           | k2tog: 2 sts dec                      | yd(s) | yard(s)                       |
|               |                                                     | mm     | millimeter(s)          | skp       | sl, k, pssso: 1 st dec                | yfwd  | yarn forward                  |
|               |                                                     | ndl(s) | needle(s)              | sl        | slip                                  | yon   | yarn over needle              |
|               |                                                     | oz     | ounce                  | sl st     | slip stitch(es)                       | yrn   | yarn around needle            |
|               |                                                     | P up   | pick up                |           |                                       |       |                               |
|               |                                                     | P, p   | purl                   |           |                                       |       |                               |
|               |                                                     | p2tog  | purl 2 sts together    |           |                                       |       |                               |



## Grrlfriend Market Bag

By Laura Spradlin  
[www.sugarbunnyblvd.com](http://www.sugarbunnyblvd.com)

Sometimes it takes a Grrlfriend to save the day. This market bag had many sources of inspiration but truly came about because of a challenge issued by Sheri of The Loopy Ewe ([www.theloopyewe.com](http://www.theloopyewe.com)). In early 2008 Sheri challenged her blog readers to knit something for another person who needed a lift – who could benefit from a random act of knitting kindness.

About six months before creating this pattern a friend of mine phoned and said she had something she needed to give me – she had to get it out of her house. It was a sweater belonging to her ex husband. A heavily cabled aran sweater knit with a worsted weight undyed cotton linen blend yarn. She hoped I could recycle the yarn into something completely different from its former existence.

When I read Sheri's challenge I knew that I could recycle that sweater into a market bag – but who would I give it to? I dyed some of the yarn, left some of it natural, and let the bag take shape on its own. The original Grrlfriend Market Bag was soon presented to my friend who gave me the sweater - in its new form - symbolic of what Grrlfriends do for each other. We help to lighten each other's load. We strive to share the burdens of life and aid in purging whatever might be weighing each other down by replacing it with something that lifts us up. The sweater has made three bags so far – who knows how many Grrlfriends it will touch?

I hope you enjoy knitting the Grrlfriend Market Bag and maybe you can make an extra one for a Grrlfriend too. We can all use a little help sharing the burdens of life – even if it's just to help carry the groceries!



# Grrrlfriend Market Bag

## Yarn:

100 - 150g fingering sport or worsted weight yarn (cotton, linen, hemp, other blends)

Needles choose a size in the range given that works with your yarn weight and preferred gauge or whatever needles you happen to have on hand:

5 double pointed needles size 4-5-6  
16" circular needle size 5-6-7-8  
24" circular needle size 10-10.5-11  
Crochet hook G-H-I

## Finished Size:

The finished size of your bag will depend on the size of your needles, weight of yarn used, and gauge achieved while knitting. The body of the bag is *very very* stretchy with a more rigid upper band to help keep its shape. The pattern can make a larger or smaller by increasing or decreasing the number of stitches on each side of the base when changing to the body.

## Techniques used in the pattern:

Circular knitting

Double pointed needles

K2tog

YO

Kitchener/grafting

Emily Ocker's Beginning (small circular caston shown on pp 112-113 of Elizabeth Zimmermann's Knitting Workshop)

## Stitch Legend:

K Knit

K2tog Knit two stitches together

P Purl

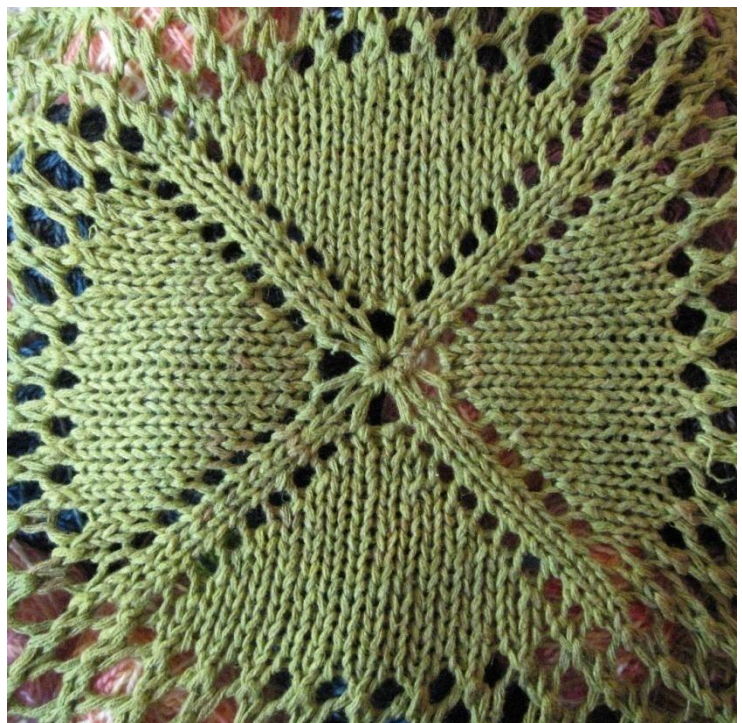
YO Yarn Over

## Instructions:

### **BOTTOM:**

To begin at the center bottom of the bag, make a circle of yarn about two inches across. Using a crochet hook and Emily Ocker's Beginning, crochet 8 single crochet stitches into the circle. You are now finished with the crochet hook. You may alternately use your preferred method of circular caston for 8 stitches.

Divide the eight stitches evenly (2 stitches per needle). This will be your most fiddly moment. Pull the tail of your yarn to close the circle at the center of your eight caston stitches.



## Grrlfriend Market Bag

Round 1: Knit 1, YO, Knit 1. Repeat this for each needle. 12 stitches total.  
Round 2: Knit around.  
Round 3: Knit 1, YO, Knit 1, YO, Knit 1. Repeat this for each needle.  
Round 4: Knit around.  
Round 5: Knit 1, YO, Knit across until 1 stitch remains on the needle, YO, Knit 1.  
Repeat this for each needle around.  
Round 6: Knit around.

Continue repeating rounds 5 and 6 until each needle has 25 stitches. Switch to the 16" circular needle when the DPNs start getting full (around 19 stitches on each needle at that point). Place a marker at the beginning of the round when you switch to circular needles.

### **BODY:**

100 stitches on needles. Using the 24" circular (large size) needle:

Round 1: (K2tog, YO) around. Marker should be at this point if it was removed when changing needles.  
Round 2: Knit around.

Repeat rounds 1 and 2 until body of bag is the length preferred. This lace pattern stretches a LOT!

### **TOP/CUFF:**

This is where you will change colors if you want the top band/cuff and strap to be a contrasting color to the body of your bag. Using the 16" circular needle:

Round 1: Knit around  
Round 2: Purl around

Repeat these rounds until the cuff is the preferred width/length. Suggested length is 8 rows or four garter bumps ending with a purl row.

### **STRAP/HANDLE:**

Continuing with the 16" circular needle:

Cast off 40 stitches purlwise.

Knit the next 10 stitches. Place these 10 stitches on a stitch holder, safety pin, or piece of waste yarn.

Cast off the next 40 stitches purlwise.

Knit the next 10 stitches, continuing in garter stitch and knitting flat (back and forth rather than in the round), knit 2 more rows, ending on the wrong side of the strap/handle (inside of bag).

Next row (right side): K1, K2tog, K4, K2tog, K1

# Grrlfriend Market Bag

Switch to DPNs. Continue knitting the strap/handle in garter stitch until it is the desired length. Remember that it will S-T-R-E-T-C-H quite a lot when you load the bag! End with a wrong side row.

Next row (right side): K1, M1, K6, M1, K1

Knit 2 more rows, ending with a right side row.

## **GRAFTING THE HANDLE:**

Transfer 10 stitches from stitch holder to DPN.

Hold the two DPNs, 10 stitches on each needle, so that the outside of the strap and outside of bag are together. Grafting these 10 stitches with kitchener stitch on the inside will make a purl bump on the outside, blending with the garter stitch of the band and strap.

Weave ends neatly.

~~~~~

Please infect your family friends and neighbors with the love of knitting by giving them copies of this pattern!

The Grrlfriend Market Bag is a free pattern and should never be sold for profit or as part of a kit. This pattern can be freely distributed and used as a teaching tool if it remains unaltered. Items made using this pattern can be sold for any purpose.

Any questions or corrections regarding this pattern or its use should be addressed to the pattern designer Laura Spradlin via email at [laura@sugarbunnyblvd.com](mailto:laura@sugarbunnyblvd.com).

## Hoodie Scarf

Knit or weave a scarf 9" wide and 72" long using your favorite pattern. Fold in half so short ends are together (9"x36") with wrong sides together. Starting at the fold, sewing the two halves together for 9". Turn right side out creating a hood with scarf ends. An edging can be added around the scarf after it is sewn together. If desired, add fringe or other decoration to the ends of the scarf. A button or tie can be put at the bottom of the hood.

This hoodie scarf can easily be altered to fit different sizes and different occasions by changing the width or length of the beginning scarf.

# Chevron iPad Sleeve

by Tanis Gray for Cascade Yarns

## Materials:

- 1 Ball Each Cascade Yarns *Greenland* (3.5oz/100g ea approx. 137yds/125m, 100% merino superwash) in #3503 Black (MC), #3536 Sapphire Heather (A), #3502 Gray (B), #3545 Doeskin Heather (C), #3501 Natural (D)
- Size US 9 16" Circular Knitting Needles
- Tapestry Needle
- 2 1" Pieces Velcro

## Gauge:

- 17 sts and 19 rows/4" in chevron pattern blocked

## Approximate Finished Size:

- 8 x 29" Before Seaming (fits all iPad models)

## Abbreviations:

- KFB: knit through front and back loop (1 st increased)
- SKP: slip 1 st knitwise, knit 1 st, pass slipped st over (1 st decreased)
- K2TOG: knit 2 sts together (1 st decreased)

## Instructions:

\*\*\*NOTES\*\*\*

- Work starts on WS row
- Velcro is used instead of button to prevent scratches on screen
- CO 36 sts with MC
- Row 1 (WS): K2, purl across to last 2 sts, k2
- Row 2 (RS): K2, kfb, k5, skp, k2tog, k5, [kfb] twice, k5, skp, k2tog, k5, kfb, k2
- Switch to A, work rows 1 and 2 three more times
- Switch to MC, work rows 1 and 2
- Switch to B work rows 1 and 2 three more times
- Switch to MC, work rows 1 and 2
- Switch to C, work rows 1 and 2 three more times





# Chevron iPad Sleeve

by Tanis Gray for Cascade Yarns

- Switch to MC, work rows 1 and 2
- Switch to D, work rows 1 and 2 three more times
- Switch to MC, work rows 1 and 2
- These 32 rows form pattern, repeat pattern for a total of 4 times
- BO knitwise with MC

## *Finishing*

- Block
- Fold lower 9.5" up and seam sides together using mattress st
- Fold upper flap down and attach Velcro for closure(s) as desired





**LION BRAND® KITCHEN COTTON  
Knit Towel Topper**



*Skill Level: Easy+*

## SIZE

**Cotton Woven Tea Towel** 15" x 6 3/4" [38 cm x 17 cm] when buttoned, excluding towel

**Cotton Terry Towel** 17" x 6 3/4" [43 cm x 17 cm] when buttoned, excluding towel

**Note** Pattern is written in two versions. The first is designed for a decorative cotton tea towel (shown) while version 2 is written for a larger terry kitchen towel.

## MATERIALS

- LION BRAND Lion Cotton

### Version 1

1 ball # 112 Poppy Red

### Version 2

1 ball # 157 Sunflower  
or color of your choice

- LION BRAND size 8 [5 mm] knitting needles OR SIZE TO OBTAIN GAUGE
- 1 skein White embroidery floss
- Embroidery needle
- 100% cotton tea towel 18" x 24" [45.5 cm x 61 cm] OR 100% cotton terry kitchen towel 21" x 28" [53.5 cm x 71 cm]
- 1" [25 mm] button

## GAUGE

18 sts + 16 rows = 4" [10 cm] in pattern  
BE SURE TO CHECK YOUR GAUGE.

## SPECIAL TECHNIQUE

**Embroidery Chain Stitch.** Thread embroidery needle with embroidery thread and make a small knot at the end. With the right side of the towel facing up, bring the needle up from underneath the towel to the top; make a small loop and hold it in place against fabric with thumb. Bring needle back down to underside, in same space where it came up. \*Bring needle up inside loop just made, toward the top, and make a new loop which will lay outside the stitch made, by bringing needle back down in space where it came up. Repeat from \* for required number of chains. End by bringing needle up inside loop and then bringing it down outside the loop to anchor final stitch.

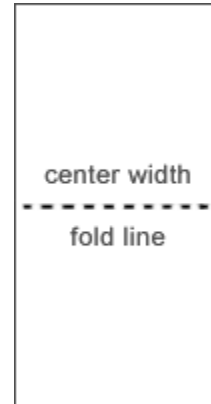


The Embroidery Chain Stitch

© 1998-2005 Lion Brand Yarn Company, all rights reserved  
34 West 15th Street, New York, New York 10011  
Call TOLL-FREE 1-800-258-YARN

**TOWEL****Version 1 – Cotton Woven Tea Towel**

Unfold towel and lay flat – do not press open. Measure and cut a length of embroidery floss 3 times the width of the towel. Thread embroidery needle with 3 strands of embroidery floss (most embroidery floss has 6 strands, so you will need to split off what you need) and, working along center width fold line, make 69 Embroidered Chain Stitches, evenly spaced. Fasten off embroidery floss and secure ends.



Change to Lion Cotton and knitting needles. With RS facing, pick up and knit 1 stitch in each embroidered chain stitch – 69 sts.

**Row 1** K 3,\* p 3, k 3; repeat from \* to end.

**Row 2** P 3,\*k 3, p 3; repeat from \* to end.

**Row 3** Repeat Row 1.

**Rows 4 and 5** Knit.

**Row 6 (First Decrease Row)** K2tog tbl, p 1,\*k 3, p 3; repeat from \* to last 3 sts; end k2tog, k 1.– 67 sts.

**Row 7** K 2, p 3,\*k 3, p 3; repeat from \* to last 2 sts, end k 2.

**Row 8** P 2, k 3,\*p 3, k 3; repeat from \* to last 2 sts, end p 2.

**Row 9** Knit.

**Row 10** K 1,\*k2tog, k 1; repeat from \* to end – 45 sts.

**Row 11** P 3,\*k 3, p 3; repeat from \* to end.

**Row 12** K 3,\* p 3,k 3; repeat from \* to end.

**Row 13** Repeat Row 11.

**Row 14** Knit.

**Row 15** \*K 1, k2tog; repeat from \* to end – 30 sts.

**Row 16** \*K 3, p 3; repeat from \* to end.

**Row 17** \*P 3, k 3; repeat from \* to end.

**Row 18** Repeat Row 16

**Row 19** Knit.

**Row 20** \*K2tog, k 1; repeat from \* to end – 20 sts

**Row 21** \*K2tog, k 1; repeat from \* to last 2 sts, k2tog – 13 sts

**Row 22** K2tog, knit to last 2 sts, k2tog – 11 sts.

**Rows 23-40** Knit.

**Row 41** K 4, bind off 3 sts, knit to end.

**Row 42** K 4, cast on 3 sts, knit to end.

**Rows 43-50** K2tog at beginning of next 8 rows, k to end – 3 sts at end of final decrease row.

Bind off remaining 3 sts.

**FINISHING**

Measure 3" [7.5 cm] from bottom of knitting and mark center. Sew on button; weave in ends.

© 1998-2005 Lion Brand Yarn Company, all rights reserved  
34 West 15th Street, New York, New York 10011  
Call TOLL-FREE 1-800-258-YARN

**Version 2 – Cotton Terry Towel**

Begin as for Version 1, but make 78 Embroidered Chain Stitches evenly spaced. Fasten off embroidery floss and secure ends.

Change to Lion Cotton and knitting needles. With RS facing, pick up and knit 1 stitch in each embroidered chain stitch – 78 sts.

**Row 1** \*K 3, p 3; repeat from \* to end.

**Row 2** \*K 3, p 3; repeat from \* to end.

**Row 3** Repeat Row 1.

**Rows 4 and 5** Knit.

**Row 6** K2tog tbl, k 1, \*k 3, p 3; repeat from \* to last 3 sts, end k 1, k2tog tbl – 76 sts.

**Row 7** P 2, \*k 3, p 3; repeat from \* to last 2 sts, end k 2.

**Row 8** P 2, \*k 3, p 3; repeat from \* to last 2 sts, end k 2.

**Row 9** Knit.

**Row 10** K 1, \*k2tog, k 1; repeat from \* to end – 51 sts.

**Row 11** P 3, \*k 3, p 3; repeat from \* to end.

**Row 12** K 3, \* p 3, k 3; repeat from \* to end.

**Row 13** Repeat Row 11.

**Row 14** Knit.

**Row 15** K 4, k2tog to last 5 sts, k 5 – 30 sts.

**Row 16** \*P 3, k 3; repeat from \* to end.

**Row 17** \*P 3, k 3; repeat from \* to end.

**Row 18** Repeat Row 16.

**Row 19** Knit.

**Row 20** \*K2tog, k 1; repeat from \* to end – 20 sts.

**Row 21** \*K2tog, k 1; repeat from \* to last 2 sts, k2tog – 13 sts.

**Row 22** K2tog, knit to last 2 sts, k2tog – 11 sts.

**Rows 23-40** Knit.

**Row 41** K 4, bind off 3 sts, knit to end.

**Row 42** K 4, cast on 3 sts, knit to end.

**Rows 43-50** K2tog at beginning of next 8 rows – 3 sts remain after all decreases have been completed.

Bind off remaining 3 sts.

**FINISHING**

Measure 3" [7.5 cm] from bottom of knitting and mark center. Sew on button; weave in ends.

**ABBREVIATIONS:**

|                         |                         |
|-------------------------|-------------------------|
| k = knit                | RS = right side         |
| k2tog = knit 2 together | st(s) = stitch(es)      |
| p = purl                | tbl = through back loop |

© 1998-2005 [Lion Brand Yarn Company](#), all rights reserved  
34 West 15th Street, New York, New York 10011  
Call TOLL-FREE 1-800-258-YARN

*\*Lion Cotton formerly 'Kitchen Cotton' (Articles #760) is an all-natural, 4-ply worsted-weight yarn of 100% cotton, made in the U.S. Solids are packaged in 5 oz./140g (236yd/212m) balls; multi-colors are in 4 oz/113 gm. (189 yd/170m) balls. Product is also available in a some colors in a 1 pound (16oz/453g 755 yd/690m) money-saving size as Item #750.*

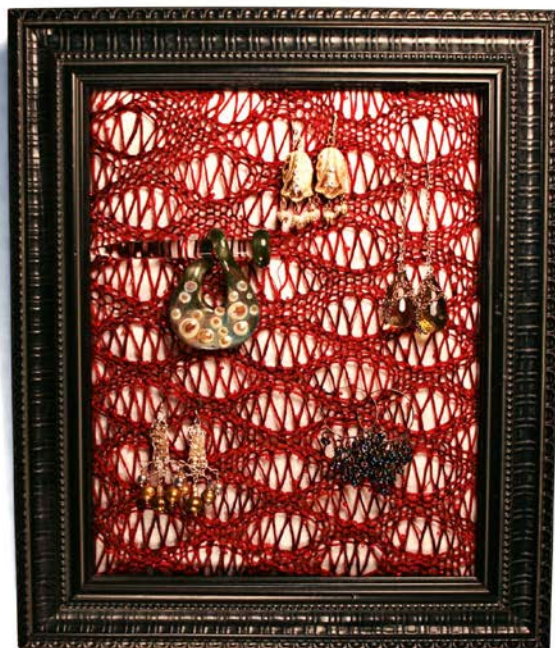
Every effort has been made to have the knitting and crochet instructions accurate and complete. We cannot be responsible for variance of individual knitters and crocheters, human errors, or typographical mistakes.

© 1998-2005 Lion Brand Yarn Company, all rights reserved  
34 West 15th Street, New York, New York 10011  
Call TOLL-FREE 1-800-258-YARN

No pattern or other material may be reproduced – mechanically, electronically or by any other means, including photocopying – without written permission of Lion Brand Yarn Company



**B.**



**A.**



■ ■ □ □  
 EASY

**Running out of time & need a last minute gift?** Give something that is beautiful as well as functional – what girl doesn't need a pretty way to organize her jewelry? Whether you knit or crochet, we've highlighted some simple lacy stitches you can use, provided a "recipe" so you can fit any size frame and provided a pretty way for you display your shawl pins or earrings as works of art!

**FEATURED YARNS**

All featured weight yarns are embellished yarns that can be substituted any fingering weight yarn. Find great deals on the featured yarns on our website at [StitchDiva.com](http://StitchDiva.com).

- **Tilli Tomas Beaded Silk** (100% Silk with beads, 168 yards per 50 gram skein)
- **Tilli Tomas Sequined Silk** (100% Silk with sequins, 200 yards per 50 gram skein)

**PATTERN NOTES**

- **About the frames:** This project requires a frame with the glass removed. Make sure you select a frame that can accommodate the width of knitted or crocheted fabric. Go out and purchase a pretty frame, or better yet, you may have some old frames lying around with broken glass, or a thrift store nearby with a vast array of inexpensive used frames to choose from. Think creative reuse!
- **Make them for any size frame, with any yarn!** Make a 4" square gauge swatch and stretch the swatch tightly **both vertically and horizontally** to figure out the stretched gauge. Note the horizontal measurement. Both the knit and crochet designs within this pattern rely on a stitch multiple (stated in each *Gauge* section). Use your stretched gauge swatch to determine the correct number of stitches to fit your desired frame dimensions based on the pattern stitch multiple:
  - Number of pattern repeats in a 4" width = \_\_\_\_\_  
 \_ (A)

- Width of frame opening = \_\_\_\_\_ (inches) (B)
- Number of sts in a pattern repeat (see pattern) = \_\_\_\_\_ (C)
- Figure out the number of pattern repeats for best fit = (A x B)/4 = Pattern Repeats = \_\_\_\_\_ (D). Round to the nearest whole number.
- Each design below states the number of stitches per pattern repeat (indicated in red in each design). Divide (D) above by this number, then add the additional stitches as indicated in each *Gauge* section for a custom frame fit.
- **Fit for length as you work:** Your stitch gauge should ensure that the width of your project is a near perfect fit to the width of the frame. To ensure a perfect height, stop stitching from time to time to fit the work over the frame insert (*next bullet*) to determine when enough rows have been completed to fill the height of the frame opening. Stop when you reach the desired length.
- **Make a cloth-covered frame insert:** Many frames come with a cardboard insert cut to the size of the frame opening. If yours doesn't, make one out of thin cardboard. Then cut your fabric so that it is about 1" wider on all sides than the cardboard insert and staple it as close as possible to the edges of the cardboard around the perimeter. The staples should be covered by the frame itself. Note the position of the staples, as you will also be stapling your knit or crochet work in the same way and do not want to hit the same staples.

- **Free Online Tutorials & Video:** Need help with basic crochet, basic knitting, casting on or binding off? We've got you covered! Visit us online for free, fully illustrated and new video tutorials: [StitchDiva.com/tutorials.aspx](http://StitchDiva.com/tutorials.aspx).

### A. SEAFOAM FRAME (Knit)

Our knitted frame example uses the Seafoam Pattern. The beauty of this stitch is not only that it highlights a beautiful yarn, but it is based on garter stitch so is knit on both the wrong and right sides. The elongated stitches are created with yarn overs to alter the height of the stitches within the row – these yarn overs are then dropped on subsequent rows.

#### Materials

- 50-75 yards fingering weight yarn. **Featured Yarn:** Tilli Tomas *Beaded Silk* in color *American Beauty*
- US #3 / 3.25mm knitting needles **OR SIZE NEEDED TO OBTAIN GAUGE**
- 8 ½ x 11 " Frame or size frame desired
- Coordinating fabric
- Cardboard cut to fit frame
- Stapler
- Tapestry needle

#### Gauge

- 15 sts = 4" **STRETCHED** in pattern (see *Pattern Notes*)
- Seafoam pattern is based on a multiple of 10 sts per pattern repeat plus 6.

#### Instructions

CO 36 sts

**Rows 1 and 2:** Knit

**Row 3:** K6, [(yo) twice, k1, (yo) 3 times, k1, (yo) 4 times, k1, (yo) 3 times, k1, (yo) twice, k6] **3** times.

**Row 4:** Knit, dropping all yo's off the ndls.

**Rows 5 and 6:** Knit

**Row 7:** K1, [(yo) twice, k1, (yo) 3 times, k1, (yo) 4 times, k1, (yo) 3 times, k1, (yo) twice, k6] **3** times, working last k6 as k1.

**Row 8:** Knit, dropping all yo's off the ndls.

Repeat *Rows 1 – 8* until work stretches well over cloth-covered frame insert, ending pattern on *Row 2* or *Row 6*. BO loosely.

**Finishing:** Weave in ends. Staple stretched knitting over cloth-covered frame insert. Insert in frame.

### B. PICOT TRELLIS FRAME (Crochet)



Requiring just chains, single crochet and double crochet, this simple stitch pattern yields a delicate and stretchy fabric that works up fast and is perfect for showcasing jewelry.

#### Materials

- 50-75 yards fingering weight yarn. **Featured Yarn:** Tilli Tomas *Sequined Lace* in color *Atmosphere*
- G / 4 mm crochet hook

#### OR SIZE NEEDED TO OBTAIN GAUGE

- 8 ½ x 11 " Frame or size frame desired
- Coordinating fabric
- Cardboard cut to fit frame
- Stapler
- Tapestry needle

#### Gauge

- 4 ½ ch-5 spaces of pattern = 4" **STRETCHED** (see *Pattern Notes*)
- Picot Trellis Stitch is based on a multiple of 5 sts per pattern repeat plus 1 (with one more for the starting chain)

#### Instructions

**Picot:** Sc, ch 3, sc into same st as last sc

Ch 47 loosely

**Row 1:** 1 sc into 2<sup>nd</sup> ch from hook, [ch 5, sk 4chs, sc into next ch] **9** times.

**Row 2:** [Ch 5, picot into 3<sup>rd</sup> ch of next ch-5 space] X times, ending ch 2, dc into last sc, skip tch, turn.

**Row 3:** Ch 1, sc into dc, [ch 5, skip picot, picot into 3<sup>rd</sup> ch of next ch-5 space] across ending ch 5, skip picot, sc into tch arch, turn.

Rep *Rows 2 – 3* until work stretches well over cloth-covered frame insert.

**Finishing:** Weave in ends. Staple stretched crochet over cloth-covered frame insert. Insert in frame.

#### TERMS & ABBREVIATIONS

|               |                |               |                |
|---------------|----------------|---------------|----------------|
| <b>Approx</b> | approximately  | <b>ndl(s)</b> | needle(s)      |
| <b>BO</b>     | bind off       | <b>rem</b>    | remain(s)(ing) |
| <b>ch</b>     | chain          | <b>rep(s)</b> | repeat(s)      |
| <b>ch-sp</b>  | chain space    | <b>RS</b>     | right side     |
|               |                | <b>sc</b>     | single crochet |
| <b>CO</b>     | cast on        | <b>sp</b>     | space          |
| <b>dc</b>     | double crochet | <b>st(s)</b>  | stitch(es)     |
| <b>k</b>      | knit           | <b>yo</b>     | yarn over      |

Other great patterns from **Stitch Diva Studios:**

(See them at [www.stitchdiva.com](http://www.stitchdiva.com) or a retailer near you)





## LINKS OF LACE BOOKMARK

© 1998 by Leef Bloomenstiel

US #2 needles  
#10 crochet cotton thread

CO 20 sts

Knit 3 rows in garter st. Beginning and ending 2 st are side borders

Make a special gift for those who love books! You can make it in any length. Use creative yarns and creatively made tassels or beads... very elegant, and very special!

*K = knit      P = purl  
st = stitch    sts = stitches  
CO = cast on  
yo = yarn over  
skpo = slip one knitwise,  
knit one, then pass the  
slipped stitch over the  
one just knitted  
sk2tpo = slip one knitwise,  
knit two together, then  
pass the slipped stitch  
over the one you just  
knit tog.  
K2tog = knit two together  
ssk = slip two stitches  
knitwise onto the right  
needle, then put the  
point of the left needle  
thru the front of both  
stitches on the right  
needle, and knit as one*



row1: (RS) k7, yo, skpo, k2, yo, skpo, k7

row2: and every even row, or alternate row, k2, purl to last 2 st, k2

row3: k5, k2tog, yo, k1, yo, skpo, k2, yo, skpo, k6

row5: k4, k2tog, yo, k3, yo, skpo, k2, yo, skpo, k5

row7: k3, k2tog, yo, k2, k2tog, yo, k1, yo, skpo, k2, yo, skpo, k4

row9: k2, k2tog, yo, k2, k2tog, yo, k3, yo, skpo, k2, yo, skpo, k3

row11: k4, yo, skpo, k2, yo, skpo, yo, k2tog, yo, k2, k2tog, yo, k2tog, k2

row13: k5, yo, skpo, k2, yo, sk2tpo, yo, k2, k2tog, yo, k4

row15: k6, yo, skpo, k2, yo, skpo, k1, k2tog, yo, k5

row16: k2, purl to last 2 st, k2

Repeat 16 rows for pattern....

I did three repeats of this pattern for the bookmark and then did a pointed finish as follows:

Knit 3 rows

next row, k2, purl to the last 2 sts, k2

***Begin pattern for point:***

row1: k1, ssk, k6 ssk, yo, k6, k2tog, k1 (18sts)

row 2, *and every alternate row:* k2, purl to the last 2 sts, k2

row3: k1, ssk, k5 yo, k2tog, k5, k2tog, k1 (16sts)

row5: k1, ssk, k4, ssk, yo, k4, k2tog, k1 (14sts)

row7: k1, ssk, k3, yo, k2tog, k3, k2tog, k1 (12sts)

row9: k1, ssk, k2, ssk, yo, k2, k2tog, k1 (10sts)

row11: k1, ssk, k1, yo, k2tog, k1, k2tog, k1 (8sts)

row13: k1, ssk, k2, k2tog, k1 (6sts)

row15: k1, ssk, k2tog, k1 (4sts)

row16: knit across

row17: ssk, k2tog (2sts)

row18: P2tog, draw end through loop. Weave in or make a tassel

Wash and block..... I wash in hot water and pin it to a Styrofoam block to dry. After drying, I use a hot steam iron and press under a cloth. Some use a light spray of starch to give it more substance.. You can use all kinds of decorative tassels or silk ribbons to dress it up.

***TIP:*** *You can make this bookmark as long as you want, just by adding more links by repeating the pattern. That way, if you have a special book, like a large coffee table book, you can make this bookmark to size.*

*This pattern makes an exceptionally nice gift for those book lover friends. I have made several as gifts for their special family bibles.*

*I love hearing from people who knit my patterns, and welcome ALL comments! Please feel free to email me at any time: leef1@texoma.net*

**You can find more of my patterns at the farm website: <http://home.texoma.net/~leef1>  
Check out the Fiber and Fiberarts page, and the Fiber Fun! page.**



# New Bittersweet Cowl

by Megan Goodacre



New Bittersweet is a great easy knit. Long enough to loop around your neck twice. Basic lace zigzags through the center, forming an intriguing flame pattern. Firm garter stitch welts at each edge help the cowl to lie flat. Worked on biggish needles in worsted or aran weight yarn, this is luxurious but quick; a fantastic last minute gift. Also a great starter lace pattern for learning how increases and decreases change the angle of stitches.

**Skill Level** easy (working in the round, basic lace)

## Yarn

Approx 300 yards worsted or aran yarn  
Shown using 2 balls Knit Picks Simply Cotton 100% cotton,  
100 g/164 yds each.

## Finished Measurements

Circumference 42 inches, height 10 inches

## Tension/gauge

16 sts and 23 rows = 4 inches in stockinette stitch

A note about the gauge: this is a relatively relaxed gauge for this weight of yarn and gives the cowl a nice drape. You may need to go up .5mm in needle size from what you would usually use for the yarn.

## Needles

US 8/5.0 mm 24-inch long circular

## Other Supplies

Stitch marker, blunt yarn needle

## Abbreviations

*k2tog* knit 2 sts together

*k* knit

*p* purl

*rep* repeat(ing)

*rnd* round

*ssk* (slip-slip-knit) slip 2 sts knitwise, put left needle through front of slipped sts and knit them together

*st(s)* stitch(es)

*yo* yarn over

## Stitches used

### Garner Stitch (in the round, any number of stitches)

**Rnd 1:** Knit all sts.

**Rnd 2:** Purl all sts.

Rep Rnds 1 and 2 for pattern.

### Zigzag Lace (in the round, multiple of 8 stitches)

**Rnd 1:** \*Yo, k6, k2tog; rep from \*.

**Rnd 2 and all even Rnds:** Knit all sts.

**Rnd 3:** \*K1, yo, k5, k2tog; rep from \*.

**Rnd 5:** \*K2, yo, k4, k2tog; rep from \*.

**Rnd 7:** \*K3, yo, k3, k2tog; rep from \*.

**Rnd 9:** \*K4, yo, k2, k2tog; rep from \*.

**Rnd 11:** \*K5, yo, k1, k2tog; rep from \*.

**Rnd 13:** \*K6, yo, k2tog; rep from \*.

**Rnd 15:** \*Ssk, k6, yo; rep from \*.

**Rnd 17:** \*Ssk, k5, yo, k1; rep from \*.

**Rnd 19:** \*Ssk, k4, yo, k2; rep from \*.

**Rnd 21:** \*Ssk, k3, yo, k3; rep from \*.

**Rnd 23:** \*Ssk, k2, yo, k4; rep from \*.

**Rnd 25:** \*Ssk, k1, yo, k5; rep from \*.

**Rnd 27:** \*Ssk, yo, k6; rep from \*.

**Rnd 28:** Knit all sts.

Rep Rnds 1-28 for pattern.

## Cowl

Cast on 168 sts. Being careful not to twist stitches, join in the round. Place marker for beginning of round.

*Note: if you want to modify the size of the cowl, change the cast on in multiples of 8. You can also change the number of pattern reps to make the cowl deeper.*

Work 6 rnds Garter Stitch.

Knit 4 rnds.

Work 6 rnds Garter Stitch.

Work 1 rep Zigzag lace.

Work 6 rnds Garter Stitch, starting on a purl row and ending with a knit row.

Knit 4 rnds.

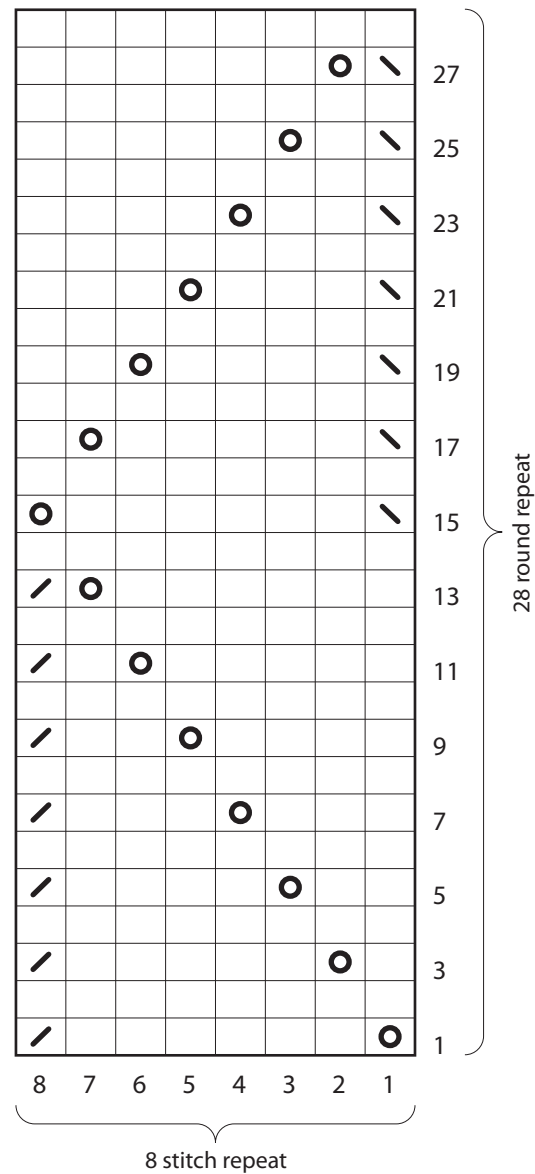
Work 6 rnds Garter Stitch, starting on a purl row and ending with a knit row.

Bind off, being careful to not to bind off tightly.

## Finishing

Weave in ends. Block. For best results and a nice drape, I like to wet block cowls.

## Zigzag Lace



## Legend

- knit
- k2tog
- ssk
- yarn over

# Classic Elite Yarns

## Slip Stitch Headband



Designed by: Cecily Glowik

**SIZES:** One Size

**Finished Measurements:** 2½" wide x 9½" long (excluding I-cords).

### MATERIALS

**Renaissance** by **Classic Elite** (100% wool; 50 gram hank = approx 110 yards)

- 1 hank Color A—7124 Giotto Grape
- 1 hank Color B—7185 Portofino Orange
- 1 hank Color C—7172 Green Pepper

### Needles

- One pair size US 6 (4 mm)
- Two dpn size US 4 (3.5 mm) for I-cord

**GAUGE:** 20 sts and 30 rows = 4" in Tweed Stitch with larger needles. **Take time to save time, check your gauge.**

### SPECIAL TERMS:

**ssk: (slip, slip, knit)** Slip 2 sts, 1 at a time, knitwise to the RH needle; return sts to LH needle in turned position and knit them together through the back loops (1 st decreased).

**k2tog:** Knit 2 sts together (1 st decreased).

### PATTERN STITCHES:

#### Tweed Stitch: (multiple of 2 sts + 1)

Row 1: (RS) With Color B, k1, \*slip 1 st purlwise wyif, k1; rep from \* to end.

Row 2: With Color B, purl.

Row 3: With Color A, k1, \*slip 1 st purlwise wyib, k1; rep from \* to end.

Row 4: With Color A, purl.

Row 5 and 6: With Color C, rep Rows 1 and 2.

Rows 7 and 8: With Color B, rep Rows 3 and 4.

Rows 9 and 10: With Color A, rep Rows 1 and 2.

Rows 11 and 12: With Color C, rep Rows 3 and 4.

Rep Rows 1–12 for Tweed St.

#### Side Stitch: (multiple of 2 sts)

Row 1: (RS) \*K1, slip 1 st purlwise wyif; rep from \* to last 2 sts, k2.

Row 2: Purl.

Row 3: K2, \*slip 1 st purlwise wyif, k1; rep from \* to end.

Row 4: Rep Row 2.

Rep Rows 1–4 for Side St

**I-Cord:** \*Knit 1 row; without turning the work, slide the sts to RH end of needle, pull yarn tightly from the end of the row, (behind the sts); rep from \* until cord meas desired length.



### HEADBAND

With larger needles and Color C, CO 47 sts. (WS) Purl. **(RS) Begin Tweed St;** work 18 rows, end WS Row 6 of Tweed St. (RS) With Color C, BO all sts knitwise.

### SIDES

With larger needles, Color C and RS facing, pick up and knit 10 sts along one short side of headband. (WS) Purl 1 row. **(RS) Begin Side**

**St;** work even for 4 rows, end WS row. **Shape Sides, dec:** (RS) Dec 1 st each side EOR 3 times as follows: (RS) K1, ssk, work in patt to last 3 sts, k2tog, k1—4 sts rem.

### FINISHING

Slip 4 sts to dpn. **Begin I-Cord;** work even until I-cord meas 6½" from sides. Pull yarn tightly through all 4 sts to fasten off. Rep Sides and Finishing for other short side of headband.

### ABBREVIATIONS

**approx**—approximately

**BO**—bind off

**ch**—chain

**CO**—cast on

**dec**—decrease

**dpn**—double pointed needles

**EOR**—every other row

**hdc**—half double crochet

**k**—knit

**k2tog**—see Special Terms

**k3tog**—see Special Terms

**LH**—left hand

**meas**—measures

**p**—purl

**p2tog**—see Special Terms

**patt**—pattern

**rem**—remain(ning)

**rep**—repeat

**RH**—right hand

**rnd(s)**—round(s)

**RS**—right side

**sc**—single crochet

**sk2p**—see Special Terms

**ssk**—see Special Terms

**st(s)**—stitch(es)

**WS**—wrong side

**wyib**—with yarn in back

**wyif**—with yarn in front

**yo**—see Special Terms

# Freeform Crochet Scrunchy



Designed by: Kristen TenDyke

**SIZES:** Any Size

**Finished Measurements:** 1½" high; width depends on size of elastic and how many sc are made originally; this will vary for each scrunchy made.

## MATERIALS:

**Renaissance** by **Classic Elite** (100% wool; 50 gram hank = approx 110 yards)

- 1 hank 7185 Portofino Orange

## Crochet Hook

- One size US H/8 (5 mm)

**Or size to obtain comfortable drape**

## GAUGE:

Gauge does not matter for this pattern.

## PATTERN STITCHES:

**Single Crochet (sc):** Insert hook in indicated stitch, yarn over and pull up a loop; yarn over and draw through both loops on hook.

**Slip Stitch (slip st):** Insert hook in the indicated stitch, yarn over and draw through both the stitch and the loop on the hook.

**Half Double Crochet (hdc):** Yarn over hook, insert hook into indicated stitch, yarn over and pull up a loop; yarn over and draw through all three loops on hook.

**Chain (ch):** Begin by making a slip knot on your hook. Wrap the yarn around the hook (yarn over) and draw it through the loop on the hook to form the first chain. Rep this step as many times as instructed. (The loop on the hook is never included when counting the number of chains).

**NOTE:** This is a freeform pattern. Each scrunchy may be different from the next depending on how many sc you make in the first rnd. For a very ruffled scrunchy, make many sc; for a more subtle ruffle, make fewer sc.

## SCRUNCHIE

Join yarn to hair elastic with a slip st.

**Rnd 1:** Ch 1, sc around hair elastic, making sure that elastic will still stretch, slip st to first sc to join.

**Rnd 2:** Ch 2 (counts as 1 hdc), hdc 2 into first sc (same sc as slip st join), \*ch 1, hdc 3 into next sc; rep from \* around; sc into first hdc to join.



**Rnd 3:** Sc into sp made by last sc of previous rnd, ch 3, sc in same sp, sc 2, \*sc into ch-1 sp, ch 3, sc in same sp, sc 2; rep from \* around; slip st into first sc of rnd to join. Fasten off.

## FINISHING

Weave in end.

# Knit Flowers



Designed by: Cecily Glowik

**SIZES:** One Size

**Finished Measurements:** Meas will vary depending on your gauge.

## MATERIALS:

**Renaissance** by **Classic Elite** (100% wool; 50 gram hank = approx 110 yards)

- 1 hank Color A—7124 Giotto Grape
- 1 hank Color B—7185 Portofino Orange
- 1 hank Color C—7172 Green Pepper

## Needles

- One pair size US 5 (3.75 mm)
- Tapestry needle
- 2 bobby pins
- 1 hair clip

## GAUGE:

Gauge does not matter for these patterns.

## SPECIAL TERMS:

**ssk: (slip, slip, knit)** Slip 2 sts, 1 at a time, knitwise to the RH needle; return sts to LH needle in turned position and knit them together through the back loops (1 st decreased).

**k2tog:** Knit 2 sts together (1 st decreased).

**k3tog:** Knit 2 sts together (2 sts decreased).

**p2tog:** Purl 2 sts together (1 st decreased).

**yo:** Yarn over (1 st increased).

**m1: (make 1)** Insert LH needle under horizontal strand between st just worked and next st, from the front to the back, knit through the back loop (1 st increased).

**sk2p:** Slip 1 st purlwise, from the LH needle to the RH needle, k2tog, pass slipped st over knit st created by k2tog (2 sts decreased).

## PATTERN STITCHES:

**Seed Stitch: (multiple of 2 sts)**

**Row 1:** (RS) \*K1, p1; rep from \* to end.

**Row 2:** Knit the purl sts and purl the knit sts as they face you.

Rep Row 2 for Seed St.

**Make Bobble:** Knit into the front, back and then front again of the same st, turn, p3, turn, k3, turn, p3, turn, k3, turn, p3, turn, sk2p.

**Cable Cast-on Method:** Place a slipknot on LH needle and k1, slip new st onto LH needle; \*insert RH needle between first 2 sts on LH needle, k1 from this position, slip new st onto LH needle. Rep from \* for desired number of sts.

## SMALL PURPLE FLOWER

With Color A, CO 35 sts.

**Row 1:** (WS) Purl.

**Row 2:** \*K1, k3tog, k1, turn, p3, turn, k3, turn, p3, turn, k3; rep from \* to end of row—21 sts.

**Row 3:** Change to Color B; \*p2tog; rep from \* to last st, p1—11 sts.



**Row 4:** \*K2tog; rep from \* to last st, k1—6 sts.

**Row 5:** Purl.

**Row 6:** \*K2tog; rep from \* to end—3 sts.

Pull yarn through rem sts and sew seam.

Slide bobby pin through WS of flower center.

## SMALL ORANGE FLOWER

### Petals

With Color B, CO 3 sts. (WS) Purl. **Row 1:** (RS) Using Cable Cast-on method, CO 8 sts, work 8 sts in Seed St, k3—11 sts. **Row 2:** P3, work in Seed St to end. **Row 3:** BO 8 sts in patt—3 sts rem. Slip last BO st to LH needle. Rep Rows 1–3 six more times for a total of 7 petals. BO 3 sts. Sew 3-st-seam.

**Center**

With Color A, CO 5 sts.

Row 1: (WS) Purl.

Row 2: K2, Make Bobble, k2.

Row 3: Purl.

Row 4: BO all sts.

Push Bobble through center of Petals and seam around on the WS. Slide bobby pin through WS of flower center.

**LARGE PURPLE FLOWER****Petals (make 5)**

With Color A, CO 3 sts.

Row 1 and all WS rows: Purl.

Row 2: K1, yo, k1, yo, k1—5 sts.

Row 4: K2, yo, k1, yo, k2—7 sts.

Row 6: K3, yo, k1, yo, k2—9 sts.

Rows 8, 12 and 16: Knit.

Row 10: K1, ssk, k3, k2tog, k1—7 sts.

Row 14: K1, ssk, k1, k2tog, k1—5 sts.

Row 18: K1, sk2p, k1—3 sts.

Row 20: Sk2p—1 st.

Pull yarn through rem st.

**Center**

With Color C, CO 5 sts.

Rows 1, 3 and 5: Purl.

Row 2: K1, m1, k1, Make Bobble, m1, k2—7 sts.

Row 4: K1, m1, k1, Make Bobble, k1, Make Bobble, m1, k2—9 sts.

Row 6: K1, ssk, k1, Make Bobble, k1, k2tog, k1—7 sts.

Row 7: P1, p2tog, p1, p2tog, p1—5 sts.

BO rem sts. Sew 5 petals evenly spaced around center. Sew flower onto hair clip.



**FREE**  
**PATTERNS**

# Minutia

knit in [Ultra™ Alpaca Light](#)  
Skill level: [Easy](#)



Twelve miniature sweater ornaments knit in Ultra™Alpaca Light.



[PDF Pattern Instructions](#)

(If you can't open this PDF file you need Adobe Acrobat Reader. Get it [here](#).)

#### NOTE 1

We made the hangers for these mini sweaters using 16 gauge colored wire. For each



hanger, cut a 12" long piece of wire. Bring the 2 ends together. 2" down from the ends, twist the 2 pieces together once to hold them in place. Shape the loop at the bottom into a hanger shape (the same as a wire coat hanger - flat across the bottom and rounded at each end). Continue to twist the 2 ends tog all the way to the end. Bend the twisted end into a hook.

## NOTE 2

There are no gauge requirements for these projects



## MATERIALS

1 Hank [BERROCO ULTRA ALPACA LIGHT](#) (50 grs), #4294 Turquoise Mix  
 Straight knitting needles, size 6 (4.00 mm)  
 1 Set (4) double pointed knitting needles (dpn), size 5 (3.75 mm)  
 Cable needle (cn)  
 2 St markers

## STITCH GLOSSARY

CB6

Sl 3 sts to cn and hold in BACK, k3, then k3 from cn

**CABLE PATTERN** (Worked over 13 sts)

**Row 1 (RS):** K6, p1, k6.

**Row 2 and all WS rows:** P6, k1, p6.

**Row 3:** Rep Row 1.

**Row 5:** CB6, p1, CB6.

**Row 6:** Rep Row 2.

Rep these 6 rows for Cable Pat.

## NOTE

Body and sleeves are worked all in one piece from lower back edge to lower right edge.

## BODY

With straight needles, cast on 19 sts.

**Establish Pat: Row 1 (RS):** P1, k1, p1, place marker, work Row 1 of Cable Pat over 13 sts, place marker, p1, k1, p1.

**Row 2:** P1, k1, p1, work Row 2 of Cable Pat over 13 sts, p1, k1, p1. Work even in Pat as established until piece measures approximately 2 1/4" from beg, end on Row 6 of Cable Pat.

**Beg Sleeves:** Cast on 6 sts at beg of the next 2 rows – 31 sts. Keeping 9 sts at each end in Seed St as established and remaining sts in Cable Pat, work even until piece measures 3 1/4" from beg, end on WS.

**Shape Neck: Next Row (RS):** Work 11 sts, join another hank of yarn and bind off center 9 sts, work to end – 11 sts each side. Working both sides at once with separate

hanks of yarn, work 1 row even.

**Following Row (RS):** Work 11 sts, cast on 9 sts over sts bound off previously for neck, drop 2nd hank of yarn and work to end – 31 sts. Work even in pat as established until piece measures 1" above cast-on sts, end on WS.

**End Sleeves:** Bind off 6 sts at beg of the next 2 rows – 19 sts. Work even in pat as established until piece measures 2 1/4" above bound-off sts, end on WS. Bind off.

## FINISHING

Sew side and sleeve seams.

**Neckband:** With RS facing, using dpn's, beg at left shoulder, pick up and k20 sts around entire neck edge. Divide onto 3 needles. Mark for beg of rnd and carry marker up. Knit 3 rnds.

**Next Rnd:** \* K1, p1, rep from \* around.

**Following Rnd:** \* P1, k1, rep from \* around. Bind off. Fold neckband down to RS.



## MATERIALS

1 Hank each [BERROCO ULTRA ALPACA LIGHT](#) (50 grs), #4201 Winter White (MC) and #4226 Pumpkin Puree (A). Small amount each #4287 Denim Mix (B) and #4275 Pea Soup Mix (C)  
 Straight knitting needles, size 5 (3.75 mm)  
 1 Set (4) double pointed knitting needles (dpn), size 5 (3.75 mm)  
 Three 3/8" buttons  
 2 St holders

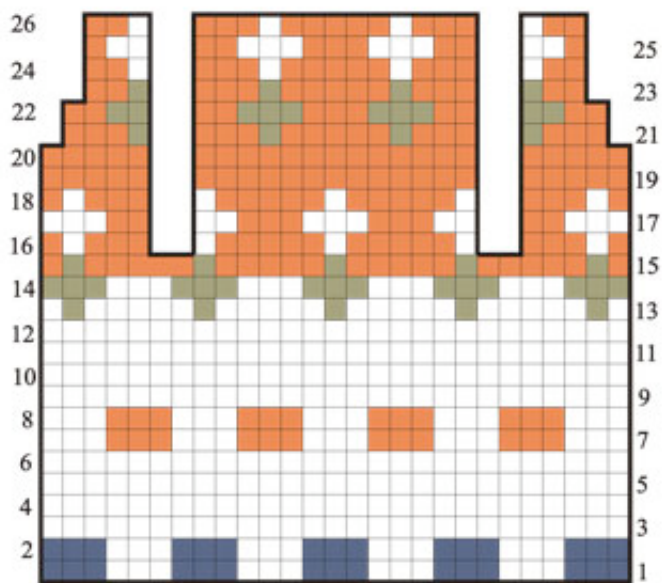


CHART FOR #2

## NOTE

Body is worked in one piece to underarm then divided for armholes.

## NOTE 2

When changing colors, hold yarn to the left and pick up new color from underneath. This twists yarn so there are no holes. When carrying yarn across more than 3 sts, twist colors tog on WS to avoid long loops.

## KEY TO CHART

□ MC

■ A

■ B

■ C

## BODY

With straight needles, using MC, cast on 29 sts.

**Ribbing: Row 1 (RS):** K1, \* p1, k1, rep from \* across.

**Row 2:** P1, \* k1, p1, rep from \* across. Rep Row 1 once more, inc 6 sts across, end on WS – 35 sts.

**Next Row (RS):** (K1, p1) twice, work Row 1 of chart to last 4 sts, (p1, k1) twice. Keeping 4 sts at each side in ribbing as established for frontbands and working remaining sts in St st following chart, work even until piece measures 2 1/2" from beg, end on Row 15 of chart.

**Divide for Back and Fronts: Next Row (RS):** Work 9 sts and sl these sts to holder for right front; bind off 2 sts, work 13 sts for back, sl remaining 11 sts to holder for left front – 13 sts. Work even in St st following chart until piece measures approximately 3 1/4" from beg and chart has been completed, end on WS. Bind off.

**Right Front:** With WS facing, sl 9 sts from holder to straight needle. Work in pat as established until Row 21 of chart has been completed, end on WS.

**Shape Neck: Next Row (RS):** Work 4 sts, sl these sts onto holder, work to end – 5 sts. Dec 1 st at neck edge every RS row twice – 3 sts. Work even until chart has been completed, end on WS. Bind off.

**Left Front:** With RS facing, sl 11 sts from holder to straight needle. Join yarn and bind off 2 sts, work to end – 9 sts. Complete to correspond to right front, reversing neck shaping. Sew shoulder seams.

## SLEEVES

With RS facing, using dpn's and MC, pick up and k15 sts around entire armhole. Divide onto 3 needles. Mark for beg of rnd and carry marker up. Work even in St st (k EVERY rnd) for 1 1/2", dec 1 st at end of last rnd – 14 sts. Work even in k1, p1 ribbing for 2 rnds. Bind off.

## FINISHING

**Neckband:** With RS facing, sl 4 sts from right front holder to straight needles, join MC and pick up and k15 sts to left front holder, work 4 sts from left front holder in ribbing as established. Beg with Row 2, work in ribbing same as body for 3 rows. Bind off in ribbing. Lap right frontband over left frontband and sew on 3 buttons, sewing through both frontbands.



## MATERIALS

1 Hank each [BERROCO ULTRA ALPACA LIGHT](#) (50 grs), #4285 Oceanic Mix (MC) and #4234 Cardinal (CC)

Straight knitting needles, size 5 (3.75 mm)

Crochet hook, size 4.00 mm (F)

## FRONT

With straight needles, using MC, cast on 14 sts. Knit 4 rows. \* Change to CC and knit 2 rows. Change to MC and knit 4 rows. Rep from \* twice more. Change to CC and knit 2 rows. Change to MC.

**Shape Sleeves:** Cast on 6 sts at beg of the next 2 rows – 26 sts. Knit 2 rows. Change to CC and knit 2 rows. Change to MC and knit 4 rows. Change to CC and knit 2 rows. Bind off.

## BACK

Work same as front.

## FINISHING

Sew shoulder/top of sleeve seams leaving center 8 sts on front and back open for neck.

**Cuffs:** With RS facing, using straight needles and CC, pick up and k13 sts along end of sleeve. Knit 1 row. Bind off. Sew side and sleeve seams.

**Neck Edging:** With RS facing, using crochet hook and CC, beg at left shoulder seam, work in sc around entire neck edge. Join with a sl st in first sc. Fasten off. With crochet hook and CC, make a chain 5" long. Fasten off. Tie chain around center front of neckband as in photo.



## MATERIALS

1 Hank each [BERROCO ULTRA ALPACA LIGHT](#) (50 grs), #4234 Cardinal (A) and #4245 Pitch Black (B)

Straight knitting needles, size 6 (4.00 mm)

Crochet hook, size 4.00 mm (F)

## NOTE 1

When changing colors, hold yarn to the left and pick up new color from underneath. This twists yarn so there are no holes.

## NOTE 2

Body is worked in one piece from lower back edge to lower front edge.

## BODY

With straight needles, using A, cast on 6 sts; join B and cast on 6 sts – 12 sts. Knit 2 rows with colors as established. Work in St st, still using colors as established, until piece measures 2" from beg, end on WS. Mark beg and end of last row for beg of armholes.

**Next Row (RS):** Reversing colors, k6 with A, then k6 with B. Work even using colors as established until armholes measure 1", end on WS.

**Shape Neck: Next Row (RS):** K3 with A, join another hank of B and bind off center 6 sts, k to end – 3 sts each side. Purl 1 row using colors as established.

**Following Row (RS):** K3 with A, cast on 3 sts; join B and cast on 3 sts, k to end – 12 sts. Beg with a p row, work even in St st using colors as established until piece measures 1" above cast-on sts, end on WS. Mark beg and end of last row for end of armholes.

**Next Row (RS):** Reversing colors, k6 with B, then k6 with A. Work even using colors as established until piece measures 1 3/4" above color reversal, end on WS. Knit 2 rows using colors as established. Bind off.

### LEFT SLEEVE

With RS facing, using A, pick up and k13 sts along left armhole between markers. Beg with a p row, work even in St st for 1 1/4", end on WS. Knit 2 rows. Bind off.

### RIGHT SLEEVE

With RS facing, using B, pick up and k13 sts along right armhole between markers. Complete same as left sleeve.

### FINISHING

Sew side and sleeve seams.

**Neck Edging:** With RS facing, using crochet hook and B, beg at left shoulder, work in sc around entire neck edge. Join with a sl st in first sc. Fasten off.

**Lower Edging:** Beg at side seam, work same as neck edging. With crochet hook and A, make a chain 8" long. Fasten off. Tie chain in a bow and sew to center front as in photo.



### MATERIALS

1 Hank each [BERROCO ULTRA ALPACA LIGHT](#) (50 grs), #4275 Pea Soup Mix (MC) and #4249 Fennel (CC)

Straight knitting needles, size 6 (4.00 mm)

Crochet hook, size 4.00 mm (F)

### NOTE 1

Body is worked in one piece from lower back edge to lower front edge.

### BODY

With straight needles, using MC, cast on 11 sts. Work even in Garter St for 2", end on RS. Change to CC and knit the next row on WS. Continue to work in Garter St until piece measures 3" from beg, end on WS.

**Shape Neck: Next Row (RS):** K3, join another hank of CC and bind off center 5 sts, k to end – 3 sts each side. Working both sides at once with separate hanks of yarn, purl 1 row.

**Following Row (RS):** K3, cast on 5 sts over sts bound off previously for neck, drop 2nd hank of yarn and k to end – 11 sts. Work even in Garter St until piece measures 1" above cast-on sts, end on RS. Change to MC and knit the next row on WS. Work even in Garter St for 2", end on WS. Bind off.

### SLEEVES

With RS facing, using straight needles and CC, pick up and k9 sts along CC section of body. Work even in Garter St for 1 1/4", end on RS. Change to MC and k the next row on WS. Knit 1 row, then bind off on WS.

## FINISHING

Sew side and sleeve seams.

**Neck Edging:** With RS facing, using crochet hook and MC, beg at left shoulder, work in sc around entire neck edge. Join with a sl st in first sc. Fasten off.



## MATERIALS

1 Hank [BERROCO ULTRA ALPACA LIGHT](#) (50 grs), #4233 Rose Spice

Straight knitting needles, size 6 (4.00 mm)

1 Set (4) double pointed knitting needles, size 5 (3.75 mm)

Cable needle (cn)

2 St markers

## STITCH GLOSSARY

### CF4

Sl 2 sts to cn and hold in FRONT, k2, then k2 from cn

### CB4

Sl 2 sts to cn and hold in BACK, k2, then k2 from cn

### CABLE PATTERN (Worked over 12 sts)

**Row 1 (RS):** CF4, k4, CB4.

**Row 2 and all WS rows:** Purl.

**Row 3:** K2, CF4, CB4, k2.

**Row 5:** K4, CB4, k4.

**Row 6:** Rep Row 2.

Rep these 6 rows for Cable Pat.

## NOTE

Body and sleeves are worked in one piece from lower back edge to lower front edge. Because of this, the Cable Pat will be upside down on the front and will appear reversed.

## BODY

With straight needles, cast on 18 sts.

**Set-Up Row (WS):** K1, p1, k1, place marker, p12, place marker, k1, p1, k1.

**Establish Cable Pat: Row 1 (RS):** K1, p1, k1, work Row 1 of Cable Pat to next marker, k1, p1, k1.

**Row 2:** K1, p1, k1, work Row 2 of Cable Pat to next marker, k1, p1, k1. Work even in pat as established until piece measures 2 1/2" from beg, end on WS.

**Beg Sleeves:** Cast on 6 sts at beg of the next 2 rows – 30 sts. Working sts before

and after markers in Seed St as established and sts between markers in Cable Pat, work even until sleeves measure 1", end on WS.

**Shape Neck: Next Row (RS):** Work 11 sts, join another hank of yarn and bind off center 8 sts, work to end. Working both sides at once, using separate hanks of yarn, work 1 row even.

**Following Row (RS):** Work 11 sts, cast on 8 sts over sts bound off for neck previously, drop 2nd hank of yarn and work to end. Work even in pat as established until piece measures 1" above cast-on sts at neck, end on WS.

**End Sleeves:** Bind off 6 sts at beg of the next 2 rows – 18 sts. Work even until piece measures 2 1/2" above end of sleeves, end on WS. Bind off.

## FINISHING

Sew side and sleeve seams.

**Neckband:** With RS facing, using dpn's, beg at left shoulder, pick up and k20 sts around entire neck edge. Divide sts onto 3 needles. Mark for beg of rnd and carry marker up. Knit 3 rnds.

**Next Rnd:** \* K1, p1, rep from \* around.

**Following Rnd:** \* P1, k1, rep from \* around. Bind off.

**Lower Edging:** With RS facing, using crochet hook, beg at side seam, work in sc around lower edge. Join with a sl st in first sc. Fasten off.



## MATERIALS

1 Hank each [BERROCO ULTRA ALPACA LIGHT](#) (50 grs), #4233 Rose Spice (A) and #4201 Winter White (B)

Straight knitting needles, size 6 (4.00 mm)

1 Set (4) double pointed knitting needles (dpn), size 5 (3.75 mm)

1 St marker

### NOTE 1

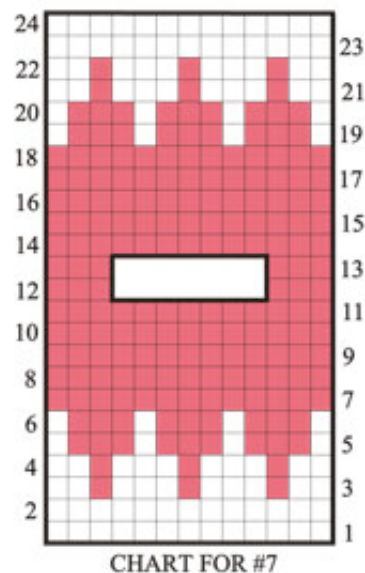
When changing colors, hold yarn to the left and pick up new color from underneath. This twists yarn so there are no holes.

### NOTE 2

Body is worked in one piece from lower back edge to lower front edge.

## BODY

With straight needles, using A, cast on 13 sts. Knit 3 rows, end on WS. Working in St st, (work 2 rows B, 2 rows A) twice, end on WS. Still working in St st, follow chart until Row 4 has been completed, end on WS. Mark beg and end of last row for beg of armholes. Continue to follow chart until Row 10 has been completed, end on



### KEY TO CHART

- A  
 B

WS.

**Shape Neck: Next Row (RS):** K3, join another hank of A and bind off center 7 sts, k to end – 3 sts each side. Working both sides at once with separate hanks of yarn, work 2 rows even, end on RS.

**Following Row (WS):** With A, p3, cast on 7 sts over sts bound off previously for neck, drop 2nd hank of yarn and p to end – 13 sts. Continue to follow chart until Row 20 has been completed, end on WS. Mark beg and end of last row for end of armholes. Continue to follow chart until Row 24 has been completed, end on WS. (Work 2 rows A, 2 rows B) twice, then knit 3 rows A. Bind off.

## SLEEVES

With RS facing, using straight needles and A, pick up and k12 sts along armhole edge between markers. Purl 1 row. Working in St st, work 2 rows B, 2 rows A, then 2 rows B. Knit 2 rows A. Bind off.

## FINISHING

Sew side and sleeve seams.

**Neckband:** With RS facing, using dpn's and A, beg at left shoulder, pick up and k20 sts around entire neck edge. Mark for beg of rnd and carry marker up. Knit 3 rnds. Bind off.



## MATERIALS

1 Hank each [BERROCO ULTRA ALPACA LIGHT](#) (50 grs), #4226 Pumpkin Puree (A) and #4275 Pea Soup Mix (B)

Straight knitting needles, size 6 (4.00 mm)

Crochet hook, size 4.00 mm (F)

## NOTE

Body and sleeves are worked in one piece from lower back edge to lower front edge.

## BODY

With straight needles, using B, cast on 1 st. K in front and back of this st – 2 sts. Inc 1 st at beg of the next 9 rows – 11 sts. Work even in Garter St until piece measures 2" from beginning point, end on WS. Change to A.

**Beg Sleeves:** Using A, cast on 5 sts at beg of the next 2 rows – 21 sts. Work even until sleeves measure 1 1/2", end on WS.

**Shape Neck: Next Row (RS):** K8, join another hank of A and bind off center 5 sts, k to end – 8 sts each side. Working both sides at once with separate hanks of yarn, knit 1 row, end on WS. Change to B and knit 1 row, end on RS.

**Following Row (WS):** K8, cast on 5 sts over sts bound off previously for neck, drop



2nd hank of yarn and k to end – 21 sts. Work even until sleeve measures 1 1/2" above cast-on sts, end on WS.

**End Sleeves:** Bind off 5 sts at beg of the next 2 rows – 11 sts. Change to A and work even for 1", end on WS. Dec 1 st at beg of the next 10 rows, end on WS. Fasten off last st.

## FINISHING

Sew side and sleeve seams.

**Neck Edging:** With RS facing, using crochet hook and A, beg at left shoulder, work in sc around entire neck edge. Join with a sl st in first sc. Fasten off.

**Sleeve Edging:** Beg at sleeve seam, work same as neck edging.



## MATERIALS

1 Hank [BERROCO ULTRA ALPACA LIGHT](#) (50 grs), #4283 Lavender Mix

Straight knitting needles, size 5 (3.75 mm)

1 Set (4) double pointed knitting needles (dpn)

Crochet hook, size 4.00 mm (F)

One 3/8" button

2 St holders

## NOTE

Body is worked in one piece to underarm then split for back and fronts.

## STITCH GLOSSARY

### M4

In next st, k1, yo, k1, yo, k1 (5 sts made in 1)

## BODY

With straight needles, cast on 33 sts.

**Row 1 (WS):** K2, p29, k2.

**Row 2:** Knit.

**Row 3:** Rep Row 1.

**Row 4:** K2, p5, (M4, p5) 4 times, k2 – 49 sts.

**Rows 5 and 7:** K7, (p5, k5) 4 times, k2.

**Row 6:** K2, p5, (k5, p5) 4 times, k2.

**Row 8:** K2, p5, (SSK, k1, k2 tog, p5) 4 times, k2 – 41 sts.

**Row 9:** K7, (p3, k5) 4 times, k2.

**Row 10:** K2, p5, (sl 2 sts tog, k1, pssso, p5) 4 times, k2 – 33 sts.

**Row 11:** K7, (p1, k5) 4 times, k2.

**Row 12:** K2, p4, (sl 2 sts tog, k1, pssso, p3) 4 times, k2 – 25 sts.

**Row 13:** K6, (p1, k3) 4 times, k3.

**Row 14:** K2, p4, (k1, p3) 4 times, p1, k2. Rep Rows 13 and 14 until piece measures 2 3/4" from beg, end on WS.

**Divide For Back and Front: Next Row (RS):** Work 6 sts, SSK, sl these 7 sts onto holder for right front; work 11 sts for back, sl remaining 8 sts onto holder for left front. Work even un 11 sts of back until piece measures 4" from beg, end on WS. Bind off.

**Right Front:** With WS facing, sl 7 sts from first holder to straight needle. Beg with a WS row, work even until piece measures 3 1/2" from beg, end on WS. Bind off 2 sts at beg of the next row for neck, then dec 1 st at same edge every RS row once – 4 sts. Work even until piece measures 4" from beg, end on WS. Bind off.

**Left Front:** With RS facing, sl 8 sts from 2nd holder to straight needle. Join yarn, k2 tog, work to end – 7 sts. Complete to correspond to right front, working neck shaping at beg of WS rows. Sew shoulder seams.

## SLEEVES

With RS facing, using dpn's, beg at lower edge of armhole, pick up and k16 sts around entire armhole edge. Divide sts onto 3 needles. Mark for beg of rnd and carry marker up.

**Rnd 1:** \* P3, k1, rep from \* around. Rep this rnd until sleeve measures 1 1/4". Work even in k1, p1 ribbing for 2 rnds. Bind off.

**Tie:** With dpn's, cast on 3 sts and work I-Cord as follows:

**Row 1 (RS):** \* K3, do not turn work. Slide sts to beg of needle to work next row from RS. Rep from \* until cord measures 8". Fasten off. Beg and end 2 sts in from front edges, weave tie in and out of body 1/2" below armholes.

## FINISHING

**Neck Edging:** With RS facing, using crochet hook, join yarn at right front edge, work in sc around entire neck edge to left front edge. Fasten off.



## MATERIALS

1 Hank each [BERROCO ULTRA ALPACA LIGHT](#) (50 grs), #4240 Blue Violet (MC) and #4281 Redwood Mix (CC)

Straight knitting needles, size 5 (3.75 mm)

1 Set (4) double pointed knitting needles, size 5 (3.75 mm)

Crochet hook, size 4.00 mm (F)

1 St holder

## NOTE

Body is knit in one piece in the round to armholes.

## BODY

With dpn's, using MC, cast on 24 sts. Divide sts evenly onto 3 needles and join, being careful not to twist sts. Mark for beg of rnd and carry marker up. Work even in St st (k

EVERY rnd) for 2".

**Divide for Armholes:** Back: Bind off 2 sts, k10 and sl these sts onto holder for front; with straight needle, bind off 2 sts, k10 – 10 sts. Beg with a p row, work back and forth in St st for 1 1/2", end on WS. Bind off.

**Front:** With WS facing, sl 10 sts from holder to straight needle. Join MC and complete same as back. Sew shoulder seams, leaving 6 sts on back and front unsewn at center for neck.

### SLEEVES

With RS facing, using dpn's and CC, beg at bound-off sts, pick up and k16 sts around entire armhole edge. Divide sts onto 3 dpn's. Mark for beg of rnd and carry marker up. Work in St st (k EVERY rnd) for 1 1/4". Work in k1, p1 ribbing for 4 rnds. Bind off in ribbing.

### FINISHING

**Neck Edging:** With RS facing, using crochet hook and CC, beg at left shoulder seam, work in sc around neck edge. Join with a sl st in first sc. Fasten off.

Lower Edging: Beg at side seam, work same as neck edging.

Tie: With dpn's, using CC, cast on 3 sts and work I-Cord as follows:

**Row 1:** \* k3, do not turn work. Slide sts to beg of needle to work next row from RS. Rep from \* until cord measures 10" from beg. Fasten off. Beg and end at center front, weave I-Cord in and out around waist of sweater. Tie as in photo.



### MATERIALS

1 Hank each [BERROCO ULTRA ALPACA LIGHT](#) (50 grs), #4275 Pea Soup Mix (MC) and #4249 Fennel (A). Small amount #4245 Pitch Black (B)

Straight knitting needles, sizes 4 (3.50 mm) and 6 (4.00 mm)

Crochet hook, size 4.00 mm (F)

Tapestry needle

### NOTE

Body is worked in one piece from lower back edge to lower front edge

### BODY

With smaller needles, using A, cast on 13 sts.

**Ribbing: Row 1 (RS):** K1, \* p1, k1, rep from \* across.

**Row 2:** P1, \* k1, p1, rep from \* across. Rep Row 1 once more, end on RS. Change to larger needles and MC. Beg with a p row, work even in St st until piece measures 2" from beg, end on WS. Mark beg and end of last row for beg of armholes. Work even until armholes measure 1", end on WS.

**Shape Neck: Next Row (RS):** K3, join another hank of MC and bind off center 7 sts, k to end – 3 sts each side. Working both sides at once with separate hanks of yarn,

purl 1 row.

**Following Row (RS):** K3, cast on 7 sts over sts bound off previously for neck, drop 2nd hank of yarn and k to end – 13 sts. Beg with a p row, work even in St st until piece measures 1" above cast-on sts, end on WS. Mark beg and end of last row for end of armholes. Work even until piece measures 1 3/4" from markers, end on RS. Change to smaller needles and A and , beg with Row 2, work in ribbing same as at beg for 3 rows. Bind off in ribbing.

### SLEEVES

With RS facing, using larger needles and MC, pick up and k14 sts between markers. Beg with a p row, work even in St st for 1 1/4", end on WS. Change to smaller needles and A and, beg with Row 2, work in Ribbing same as body for 3 rows. Bind off in ribbing.

### FINISHING

**Neck Edging:** With RS facing, using crochet hook and A, beg a left shoulder, work in sc around entire neck edge, join with a sl st in first sc. Fasten off. Using tapestry needle and A, make daisies as in photo using 4 lazy daisy sts for each flower. Using tapestry needle and B, make 1 French knot in center of each daisy. Sew side and sleeve seams.



### MATERIALS

1 Hank each [BERROCO ULTRA ALPACA LIGHT](#) (50 grs), #4201 Winter White (MC) and #4234 Cardinal (CC)

Straight knitting needles, size 6 (4.00 mm)

1 Set (4) double pointed knitting needles (dpn), size 5 (3.75 mm)

*Optional:* 1 heart-shaped button or pendant

### NOTE

Body is worked in one piece from lower back edge to lower front edge

### BODY

With straight needles, using CC, cast on 13 sts. Knit 3 rows, end on WS. Change to MC and work even in St st until piece measures 2 1/4", end on WS. Mark beg and end of last row for beg of armholes. Work even until armholes measure 1", end on WS.

**Shape Neck: Next Row (RS):** K3, join another hank of MC and bind off center 7 sts, k to end – 3 sts each side. Working both sides at once with separate hanks of yarn, purl 1 row.

**Following Row (RS):** K3, cast on 7 sts over sts bound off previously for neck, drop 2nd hank of yarn and k to end – 13 sts. Beg with a p row, work even in St st until piece measures 1" above cast-on edge of neck, end on WS. Mark beg and end of last

row for end of armholes. Work even until piece measures 2" above markers, end on WS. Change to CC and knit 3 rows. Bind off.

### **SLEEVES**

With RS facing, using straight needles and MC, pick up and k12 sts between markers. Beg with a p row, work even in St st for 1", end on WS. Change to CC and knit 3 rows. Bind off.

### **FINISHING**

Sew side and sleeve seams.

**Neck Edging:** With RS facing, using dpn's and CC, beg at left shoulder, pick up and k17 sts around entire neck edge. Mark for beg of rnd and carry marker up. Purl 3 rnds. Bind off. Sew optional heart-shaped button or pendant to center front neck just below neck edging.

Free Pattern

## Felted Christmas Stocking

© Chris de Longpré, 2003  
[www.KnittingAtKnoon.com](http://www.KnittingAtKnoon.com)

Not for Resale

Simple and warmly festive

Happy Holidays from Knitting At Knoon Designs!



### **Materials:**

Yarn – Worsted weight, 100% wool yarn for felting, such as *Lamb's Pride Worsted* by Brown Sheep, *Galway* by Plymouth, or *Cascade 220*. Main Color (A): 1 skein; Contrast Colors (B) and (C): small amounts. Three skeins of wool will yield three stockings, each a different main color. *Purchase extra yarn for swatching.*

Needles –5 double-point needles, US size 10 (6mm), or size needed to obtain gauge.

Other – Tapestry needle.

**Gauge:** 16 stitches and 20 rows = 4" in stockinet stitch (before felting).

**Size:** Size will vary depending on yarn and amount of felting. Models shown were knit in *Lamb's Pride Worsted* and only lightly felted (some stitch definition remains). They measure 6-1/2" x 15", finished.

### **Notes:**

- 1) Certain colors (white and yellow, in particular) may not felt. It is essential to swatch to test the felting properties of the wool!
- 2) Felting: Set washer load size to small and fill with very hot water. Add a small amount of mild soap. Place stocking in a mesh bag and toss in the washer with several pairs of jeans. Agitate, checking size every five minutes. Do not run through the spin cycle. When fabric is desired density and approximate size has been reached, remove stocking and rinse thoroughly in cool water. Roll in a towel to remove as much excess water as possible. Pull, press, and pat into shape and allow to dry completely.

## Instructions:

With A, cast on 56 stitches. Distribute on 4 needles (14 sts each) and join in a round. Work 10 rounds in A. Work 4 rounds in B, 2 rounds in C, 2 rounds in A, 2 rounds in C, and 4 rounds in B. Continue in A for 39-3/4 rounds more. (End the last round after knitting the stitches on needle 3.)

Reserve stitches for heel: Slip the first st on needle 4 as if to purl. Work remaining 13 with waste yarn. Work 13 sts on needle 1 with waste yarn. Slip the last st as if to purl.

Foot: Beginning with the first st slipped (this is now the beginning of all remaining rounds), work 15 rounds in A.

Shape toe:      Rnd 1              on each needle: k2tog, knit to last 2 sts, ssk  
                         Rnd 2              knit even

Repeat these two rounds until 4 sts remain on each needle. Last decrease round: k2tog, ssk around. Break off yarn and thread through remaining 8 sts. Pull up and thread end to inside.

Heel: ([on-site demo](#)) Carefully remove waste yarn, replacing 26 sts each on top and bottom. Pick up one extra stitch each end of each needle. Beginning at one end, distribute sts evenly on 4 needles (14 sts on each needle). Shape heel as for toe.

## Finishing:

With A, pick up and knit 56 sts around the top of stocking. With C, work a 3-stitch attached I-cord ([on-site demo](#)) around the top. Work 20-25 rows of unattached I-cord ([on-site demo](#)) and sew the end to the inside to form a loop for hanging. Weave in ends and felt.

# Knitting At Knoon Designs Knifty Projects for Hand Knitters

Knitting Patterns and Free Tutorial Knitting Videos  
[www.KnittingAtKNoon.com](http://www.KnittingAtKNoon.com)

Knitting At Knoon Designs are carried by a growing number of fine yarn stores. Resellers, please send for a brochure and price list:

[Chris@KnittingAtKNoon.com](mailto:Chris@KnittingAtKNoon.com)  
Knitting At Knoon Designs  
4783 Brooklyn Ave SE  
Kentwood MI USA 49508

Unsure about a technique used in this pattern? Visit [www.KnittingAtKNoon.com](http://www.KnittingAtKNoon.com) for free on-line video demonstrations of techniques used in this, and other, Knitting At Knoon patterns.